

Annual Statistics 2022

FEFCO ANNUAL STATISTICS 2022

<u>Tables:</u>	Page
Key Statistics	2
Total Shipments (Millions of m ²) (including Non-Members)	3
Total Shipments ('000 Tonnes) (including Non-Members)	4
Shipments of Member Companies (Millions of m ²)	5
Shipments of Member Companies ('000 Tonnes)	6
Total Number of Companies (including Non-Members)	7
Total Number of Plants (including Non-Members)	8
Total Number of Corrugators (including Non-Members)	9
Average Weight of Board in g/m ² (including Non-Members)	10
Die Cut Boxes (as % of total shipments in m ²) (including Non-Members & Sheetplants)	11
Total Consumption of Raw Materials ('000 Tonnes) (including Non-Members)	12
Consumption of White or Colored Kraftliner (as % of total consumption of Raw Materials)	13
Consumption of Brown Kraftliner (as % of total consumption of Raw Materials)	14
Consumption of White Top Testliner (as % of total consumption of Raw Materials)	15
Consumption of Testliners (as % of total consumption of Raw Materials)	16
Consumption of Other Liners	17
Consumption of Semi-Chemical Fluting (as % of total consumption of Raw Materials)	18
Consumption of Recycled Fluting (as % of total consumption of Raw Materials)	19
Total Number of Personnel	20
Production per Head ('000 m ²)	21
Nominal Working Time per Person (Hours per Year)	22
Shipments to CONVERTERS	23
Shipments to TRADERS	24
Classification by End Use	(seperate sheet) 25
Fluting Types in % of total shipments	(seperate sheet) 26
Printing Colours	(seperate sheet) 27
Diagramms	28-32

Ver: 20230718

FEFCO ANNUAL REPORT 2022 Key Statistics

This results are applying only to countries which have reported value for both year

	2021	2022	% Change
Total Shipments (Millions of m ²) (including Non-Members)	50.985	48.443	-5,0
Total Shipments ('000 Tonnes) (including Non-Members)	25.395	24.049	-5,3
Shipments of Member Companies (Millions of m ²)	34.368	32.603	-5,1
Shipments of Member Companies ('000 Tonnes)	17.187	16.212	-6,0
Total Number of Companies (including Non-Members)	301	298	-1,0
Total Number of Plants (including Non-Members)	573	574	0,2
Average Weight of Board in g/m ² (including Non-Members)	498	496	-0,3
Total Consumption of Raw Materials ('000 Tonnes) (including Non-Members)	24.322	22.904	-5,8
Consumption of White or Colored Kraftliner as % of total consumption of Raw Materials	5,6	4,9	-14,3
Consumption of Brown Kraftliner as % of total consumption of Raw Materials	12,4	13,0	4,6
Consumption of White Top Testliner as % of total consumption of Raw Materials	7,2	7,2	0
Consumption of Testliner as % of total consumption of Raw Materials	33,7	34,0	0,9
Consumption of Other Recycled Liner as % of total consumption of Raw Materials	2,8	3,0	6,7
Consumption of Semi-chemical Fluting as % of total consumption of Raw Materials	2,4	2,4	0
Consumption of Recycled Fluting as % of total consumption of Raw Materials	37,2	36,7	-1,4
Total Personnel	91.991	93.058	1,1
Shipments to CONVERTERS (in %)	23,3	23,4	-0,6
Shipments to TRADERS (in %)	10,9	11,9	-3,0

Total Shipments in Millions of m²
(including Non-Members)

	2021	2022	% Change 2021/2022	Members Only
Austria	1.059	995	-6,04	Y / Y
Benelux	2.926	2.882	-1,51	N / N
Croatia	419	413	-1,43	N / N
Czech Republic	1.285	1.230	-4,28	N / N
Finland	279	n.a.	n.a.	n.a. / n.a.
France	5.632	5.439	-3,43	n.a. / n.a.
Germany	12.059	11.307	-6,24	N / N
Hungary	611	606	-0,82	N / N
Italy	8.306	8.006	-3,61	N / N
Norway	240	233	-3,06	Y / Y
Poland	5.147	4.698	-8,72	N / N
Portugal	n.a.	n.a.	n.a.	n.a. / n.a.
Romania	946	895	-5,39	Y / Y
Spain	6.122	5.943	-2,92	N / N
Sweden	679	678	-0,15	Y / Y
Turkey	5.161	n.a.	n.a.	N / n.a.
United Kingdom	5.554	5.118	-7,85	N / N
TOTAL EUROPE	50.985	48.443	-5,00	

This results are applying only to countries which have reported value for both year

B3

Total Shipments in 000's Tonnes
(including Non-Members)

	2021	2022	% Change 2021/2022
Austria	509	483	-5,11
Benelux	1.535	1.507	-1,82
Croatia	138	140	1,45
Czech Republic	610	577	-5,41
Finland	123	n.a.	n.a.
France	2.767	2.643	-4,48
Germany	6.058	5.710	-5,74
Hungary	304	307	0,99
Italy	4.479	4.284	-4,35
Norway	109	107	-1,29
Poland	2.465	2.267	-8,03
Portugal	n.a.	n.a.	n.a.
Romania	457	436	-4,60
Spain	3.119	2.971	-4,75
Sweden	341	329	-3,52
Turkey	2.634	n.a.	n.a.
United Kingdom	2.505	2.288	-8,66
TOTAL EUROPE	25.395	24.049	-5,30

This results are applying only to countries which have reported value for both year

B4

Shipments of Member Companies in Millions of m²

	2021	2022	% Change 2021/2022
Austria	1.059	995	-6,04
Benelux	2.095	2.018	-3,68
Croatia	295	301	2,03
Czech Republic	874	842	-3,66
Finland	n.a.	n.a.	n.a.
France	n.a.	n.a.	n.a.
Germany	8.664	8.029	-7,33
Hungary	571	566	-0,88
Italy	5.223	4.970	-4,84
Norway	240	233	-3,06
Poland	4.397	4.315	-1,87
Portugal	n.a.	n.a.	n.a.
Romania	946	895	-5,39
Spain	4.682	4.544	-2,93
Sweden	679	678	-0,15
Turkey	3.456	n.a.	n.a.
United Kingdom	4.643	4.217	-9,18
Membership Total	34.368	32.603	-5,10

This results are applying only to countries which have reported value for both year

B5

Shipments of Member Companies in 000's Tonnes

	Membership 2021		Membership 2022	
	Tonnes	% of total shipments	Tonnes	% of total shipments
Austria	509	100,00	483	100,00
Benelux	1.099	71,60	1.055	70,01
Croatia	134	97,10	137	97,86
Czech Republic	415	67,96	394	68,31
Finland	n.a.	n.a.	n.a.	n.a.
France	n.a.	n.a.	n.a.	n.a.
Germany	4.386	72,40	4.045	70,84
Hungary	284	93,42	287	93,49
Italy	2.879	64,28	2.730	63,73
Norway	109	100,00	107	100,00
Poland	2.097	85,07	2.052	90,50
Portugal	n.a.	n.a.	n.a.	n.a.
Romania	457	100,00	436	100,00
Spain	2.383	76,42	2.272	76,46
Sweden	341	100,00	329	100,00
Turkey	1.763	66,93	n.a.	n.a.
United Kingdom	2.094	83,59	1.885	82,39
Membership Total	17.187	76,00	16.212	75,70

This results are applying only to countries which have reported value for both year

B6

Total Number of Corrugating Companies
(including Non-Members)

	2021	2022
Austria	5	5
Benelux	17	17
Croatia	5	5
Czech Republic	7	7
Finland	4	n.a.
France	11	11
Germany	43	43
Hungary	8	8
Italy	45	44
Norway	3	3
Poland	45	47
Portugal	n.a.	n.a.
Romania	11	11
Spain	71	67
Sweden	4	4
Turkey	105	n.a.
United Kingdom	26	26
TOTAL EUROPE	301	298

This results are applying only to countries which have reported value for both year

B7

Total Number of Corrugating Plants (including Non-Members)

	2021	2022
Austria	8	8
Benelux	40	40
Croatia	5	5
Czech Republic	9	9
Finland	9	n.a.
France	63	63
Germany	126	126
Hungary	10	10
Italy	69	69
Norway	3	3
Poland	60	62
Portugal	n.a.	n.a.
Romania	13	13
Spain	89	88
Sweden	10	10
Turkey	130	n.a.
United Kingdom	68	68
TOTAL EUROPE	573	574

This results are applying only to countries which have reported value for both year

B8

Total Number of Corrugators
(including Non-Members)

	2022			Result
	<2m	>2 <2,5m	> 2,5m	
Austria	2	5	2	9
Benelux	n.a.	20	10	30
Croatia	n.a.	1	n.a.	1
Czech Republic	1	5	4	10
Finland	n.a.	n.a.	n.a.	
France	n.a.	n.a.	n.a.	n.a.
Germany	5	66	35	106
Hungary	3	7	1	11
Italy	7	64	23	94
Norway	n.a.	2	1	3
Poland	n.a.	n.a.	n.a.	n.a.
Portugal	n.a.	n.a.	n.a.	
Romania	n.a.	11	2	13
Spain	9	73	11	93
Sweden	n.a.	10	n.a.	10
Turkey	n.a.	n.a.	n.a.	n.a.
United Kingdom	24	43	10	77
TOTAL EUROPE	51	307	99	457

B9

Average Weight of Board in g/m²
(including Non-Members)

	2021	2022
Austria	481	485
Benelux	525	523
Croatia	329	339
Czech Republic	475	469
Finland	441	n.a.
France	491	486
Germany	502	505
Hungary	498	507
Italy	539	535
Norway	453	461
Poland	479	483
Portugal	n.a.	n.a.
Romania	483	487
Spain	509	500
Sweden	502	485
Turkey	510	n.a.
United Kingdom	451	447
TOTAL EUROPE as weighted average	498	496

B10

Die Cut Boxes

(as % of total shipments in m², including Non-Members & Sheet Plants)

	2021	2022
Austria	51,9	56,0
Benelux	41,3	41,5
Croatia	38,2	42,6
Czech Republic	29,1	29,7
Finland	56,1	n.a.
France	n.a.	n.a.
Germany	48,9	50,9
Hungary	58,0	51,3
Italy	n.a.	n.a.
Norway	62,5	62,6
Poland	42,8	40,8
Portugal	n.a.	n.a.
Romania	34,3	28,6
Spain	n.a.	n.a.
Sweden	53,0	55,0
Turkey	n.a.	n.a.
United Kingdom	51,4	51,3
TOTAL EUROPE as weighted average	46,7	47,1

B11

Total Consumption of Raw Materials in 000's Tonnes
(including Non-Members)

	2021	2022	% Change 2021/2022
Austria	569	541	-4,92
Benelux	1.807	1.718	-4,93
Croatia	149	177	18,79
Czech Republic	699	653	-6,58
Finland	144	n.a.	n.a.
France	n.a.	n.a.	n.a.
Germany	6.397	6.024	-5,83
Hungary	333	316	-5,11
Italy	4.613	4.412	-4,36
Norway	123	120	-2,61
Poland	2.564	2.358	-8,05
Portugal	n.a.	n.a.	n.a.
Romania	505	500	-0,99
Spain	3.459	3.295	-4,75
Sweden	355	337	-5,07
Turkey	n.a.	n.a.	n.a.
United Kingdom	2.749	2.453	-10,77
TOTAL EUROPE	24.466	22.904	-5,80

B12

Consumption of White or Colored Kraftliner

(CCB Classification 02-04-06-08-91-98 ; as % of the total consumption of Raw Materials)

	2021	2022
Austria	5,0	5,0
Benelux	4,8	5,0
Croatia	1,0	1,5
Czech Republic	3,6	2,8
Finland	n.a.	n.a.
France	n.a.	n.a.
Germany	4,7	4,8
Hungary	1,8	2,6
Italy	7,2	7,2
Norway	27,9	28,4
Poland	2,3	1,6
Portugal	n.a.	n.a.
Romania	1,7	9,2
Spain	3,9	3,5
Sweden	7,0	8,0
Turkey	2,0	n.a.
United Kingdom	11,6	4,9
TOTAL EUROPE as weighted average	5,6	4,9

B13

Brown Kraftliner

CCB Classification 00-09-90-92-97 ; as % of the total consumption of Raw Materials)

	2021	2022
Austria	13,2	14,0
Benelux	14,4	14,7
Croatia	5,9	6,2
Czech Republic	11,5	12,3
Finland	14,1	n.a.
France	n.a.	n.a.
Germany	13,7	13,4
Hungary	16,2	14,8
Italy	14,5	14,8
Norway	14,5	14,7
Poland	8,3	8,3
Portugal	n.a.	n.a.
Romania	12,1	12,7
Spain	13,6	12,9
Sweden	24,0	25,0
Turkey	9,0	n.a.
United Kingdom	4,9	10,4
TOTAL EUROPE as weighted average	12,4	13,0

B14

WHITE TOP TESTLINER

CCB Classification 70-71-72 ; as % of the total consumption of Raw Materials)

	2021	2022
Austria	9,4	9,7
Benelux	10,3	9,8
Croatia	12,2	13,1
Czech Republic	7,1	6,2
Finland	24,8	n.a.
France	n.a.	n.a.
Germany	7,9	8,4
Hungary	6,6	8,4
Italy	1,6	1,7
Norway	0,8	0,7
Poland	14,0	13,5
Portugal	n.a.	n.a.
Romania	7,4	6,5
Spain	6,4	6,3
Sweden	n.a.	n.a.
Turkey	6,0	n.a.
United Kingdom	n.a.	n.a.
TOTAL EUROPE as weighted average	7,2	7,2

B15

Consumption of Testliners
(CCB Classification 10-11-12-20-21-22-30-32-38-50-55 ;
as % of the total consumption of Raw Materials)

	2021	2022
Austria	28,9	29,0
Benelux	44,0	42,2
Croatia	35,9	34,2
Czech Republic	35,7	36,2
Filand	n.a.	n.a.
France	n.a.	n.a.
Germany	33,4	33,5
Hungary	30,3	30,8
Italy	24,4	24,5
Norway	21,7	21,2
Poland	37,4	37,2
Portugal	n.a.	n.a.
Romania	31,1	31,2
Spain	31,8	34,5
Sweden	30,0	24,0
Turkey	24,0	n.a.
United Kingdom	44,4	46,3
TOTAL EUROPE as weighted average	33,7	34,0

B16

Consumption of Other Liners

(CCB Classification 53-74 ; as % of the total consumption of Raw Materials)

	2021	2022
Austria	2,3	3,0
Benelux	1,1	3,7
Croatia	2,5	3,5
Czech Republic	2,5	3,3
Finland	24,2	n.a.
France	n.a.	n.a.
Germany	1,1	0,9
Hungary	3,7	4,2
Italy	4,0	4,2
Norway	0,0	0,0
Poland	1,9	1,8
Portugal	n.a.	n.a.
Romania	8,0	5,6
Spain	5,6	5,3
Sweden	n.a.	n.a.
Turkey	7,0	n.a.
United Kingdom	n.a.	n.a.

TOTAL EUROPE as weighted average	2,8	3,0
--	------------	------------

B17

Consumption of Semi-Chemical Fluting
(CCB Classifications 40-46-47 ; as % of the total consumption of Raw Materials)

	2021	2022
Austria	8,3	5,3
Benelux	0,8	0,5
Croatia	0,7	0,5
Czech Republic	0,1	0,4
Finland	9,3	n.a.
France	n.a.	n.a.
Germany	0,7	0,7
Hungary	2,1	1,9
Italy	5,1	5,9
Norway	15,5	16,2
Poland	0,6	0,6
Portugal	n.a.	n.a.
Romania	3,6	1,6
Spain	4,2	4,0
Sweden	8,0	8,0
Turkey	7,0	n.a.
United Kingdom	0,6	0,3
TOTAL EUROPE as weighted average	2,4	2,4

B18

Consumption of Other Fluting (Recycled paper basis)

(CCB Classifications 41-43-44-45-60-61 ; as % of the total consumption of Raw Materials)

	2021	2022
Austria	32,9	34,0
Benelux	24,6	24,2
Croatia	41,8	41,0
Czech Republic	39,5	38,8
Finland	100,0	n.a.
France	n.a.	n.a.
Germany	38,5	38,4
Hungary	39,3	37,3
Italy	43,2	41,7
Norway	19,6	18,8
Poland	35,5	36,9
Portugal	n.a.	n.a.
Romania	36,1	33,3
Spain	34,7	33,5
Sweden	31,0	35,0
Turkey	45,0	n.a.
United Kingdom	38,5	38,1
TOTAL EUROPE as weighted average	37,2	36,7

B19

Total Number of Personnel

	2021		2022	
	Production Employees	Total Employees	Production Employees	Total Employees
Austria	1.390	1.882	1.390	1.882
Benelux	2.837	3.758	3.026	4.007
Croatia	156	196	159	206
Czech Republic	1.723	2.263	1.651	2.191
Finland	223	981	n.a.	
France	n.a.	n.a.	n.a.	n.a.
Germany	15.743	21.477	15.899	21.808
Hungary	1.215	1.843	1.418	2.075
Italy	7.480	16.850	8.660	17.690
Norway	384	579	376	573
Poland	6.048	8.646	6.278	9.112
Potugal	n.a.	n.a.	n.a.	n.a.
Romania	2.568	3.882	2.702	4.169
Spain	8.588	11.312	8.610	11.438
Sweden	1.157	1.625	1.178	1.703
Turkey	6.900	9.100	n.a.	n.a.
United Kingdom	11.131	16.697	10.803	16.204
TOTAL EUROPE	60.420	91.991	62.150	93.058

This results are applying only to countries which have reported value for both year

B20

Production per Head in 1000 m²

	2021	2022
Austria	762	716
Benelux	1.031	952
Croatia	2.686	2.597
Czech Republic	746	745
Finland	1.251	n.a.
France	n.a.	n.a.
Germany	766	711
Hungary	503	427
Italy	1.110	924
Norway	626	620
Poland	851	748
Portugal	n.a.	n.a.
Romania	368	331
Spain	713	690
Sweden	587	576
Turkey	748	n.a.
United Kingdom	499	474
TOTAL EUROPE	844	779

B21

Nominal Working Time and Productivity per Head

	Working Time [hours / year]		Productivity [m ² /Person hour]	
	2021	2022	2021	2022
Austria	1.713	1.705	445	420
Benelux	1.743	1.680	592	567
Croatia	2.024	2.000	1.327	1.299
Czech Republic	1.889	1.889	395	394
Finland	n.a.	n.a.	n.a.	n.a.
France	n.a.	n.a.	n.a.	n.a.
Germany	1.228	1.184	624	601
Hungary	1.848	1.848	272	231
Italy	2.040	2.016	544	459
Norway	1.697	1.690	369	367
Poland	2.016	2.008	422	373
Portugal	n.a.	n.a.	n.a.	n.a.
Romania	1.860	2.008	198	165
Spain	1.768	1.768	403	390
Sweden	1.505	1.505	390	382
Turkey	2.010	n.a.	372	n.a.
United Kingdom	1.710	1.710	292	277
TOTAL EUROPE	1.789	1.770	475	456

B22

Shipments to CONVERTERS (STC) Share
(in % of total shipments of m²)

	2021	2022	% Change STC Share 2021/2022
Austria	12,8	13,3	3,91
Benelux	42,0	41,6	-0,88
Croatia	40,0	40,2	0,50
Czech Republic	16,2	15,9	-1,85
Finland	n.a.	n.a.	n.a.
France	n.a.	n.a.	n.a.
Germany	6,1	6,6	8,20
Hungary	94,8	100,0	5,49
Italy	33,5	33,1	-1,19
Norway	3,6	2,9	-18,80
Poland	30,0	32,0	6,67
Portugal	n.a.	n.a.	n.a.
Romania	35,0	28,0	-20,00
Spain	15,1	15,2	1,00
Sweden	n.a.	n.a.	n.a.
Turkey	n.a.	n.a.	n.a.
United Kingdom	32,2	30,2	-6,21
TOTAL EUROPE	23,3	23,4	

B23

Shipments to TRADERS (STT) Share
(in % of total shipments of m²)

	2021	2022	% Change STT Share 2021/2022
Austria	7,6	7,5	-1,32
Benelux	6,7	5,9	-12,24
Croatia	5,0	7,1	42,00
Czech Republic	n.a.	n.a.	n.a.
Finland	14,3	n.a.	n.a.
France	n.a.	n.a.	n.a.
Germany	7,6	9,0	18,42
Hungary	5,2	n.a.	n.a.
Italy	n.a.	n.a.	n.a.
Norway	41,9	43,0	2,83
Poland	20,0	21,0	5,00
Portugal	n.a.	n.a.	n.a.
Romania	23,0	20,0	-13,04
Spain	n.a.	n.a.	n.a.
Sweden	n.a.	n.a.	n.a.
Turkey	n.a.	n.a.	n.a.
United Kingdom	n.a.	n.a.	n.a.
TOTAL EUROPE	10,9	11,9	

Classification of shipment by end-use sector, as a percentage of turnover 2022

	Austria	Benelux	Croatia	Czech Republic	France	Finland	Germany	Hungary	Italy	Norway	Poland	Portugal	Romania	Spain	Sweden	Turkey	United Kingdom	Weighted Average
1	17,4	20,3	7,3	0,9	n.a.	n.a.	2,9	2,6	9,9	14,6	8,3	n.a.	2,8	25,1	n.a.	n.a.	n.a.	10,5
2	2,7	2,2	13,1	0,9	n.a.	n.a.	2,5	2,8	3,3	16,0	5,0	n.a.	1,8	8,9	n.a.	n.a.	n.a.	4,2
3	4,6	5,9	24,7	11,0	n.a.	n.a.	6,4	5,1	5,0	9,5	7,3	n.a.	4,3	5,3	n.a.	n.a.	n.a.	6,3
4	7,4	24,4	13,8	14,0	n.a.	n.a.	26,8	10,4	30,8	15,1	16,2	n.a.	7,0	21,2	n.a.	n.a.	n.a.	22,5
5	13,3	6,8	6,3	5,9	n.a.	n.a.	6,1	3,5	11,5	5,3	5,2	n.a.	5,8	9,0	n.a.	n.a.	n.a.	7,6
6	8,7	11,1	5,5	17,1	n.a.	n.a.	10,2	21,8	9,3	4,7	10,5	n.a.	15,7	5,3	n.a.	n.a.	n.a.	9,8
7	9,6	3,1	4,2	11,6	n.a.	n.a.	6,1	7,2	3,6	6,8	10,8	n.a.	27,1	1,7	n.a.	n.a.	n.a.	6,4
8	1,0	0,2	n.a.	5,2	n.a.	n.a.	2,6	13,2	2,2	1,4	6,2	n.a.	1,0	0,7	n.a.	n.a.	n.a.	2,8
9	2,6	3,9	5,1	4,5	n.a.	n.a.	4,6	4,5	1,2	n.a.	1,1	n.a.	3,7	2,5	n.a.	n.a.	n.a.	2,9
10	4,6	4,5	2,4	3,5	n.a.	n.a.	10,6	4,9	3,2	n.a.	1,6	n.a.	1,3	4,7	n.a.	n.a.	n.a.	5,4
11	0,6	2,7	1,6	0,8	n.a.	n.a.	1,5	0,2	1,6	6,5	0,6	n.a.	0,3	2,1	n.a.	n.a.	n.a.	1,5
12	10,0	1,4	8,7	10,7	n.a.	n.a.	7,3	0,2	9,9	n.a.	8,5	n.a.	0,7	2,3	n.a.	n.a.	n.a.	6,5
13	4,4	3,4	2,3	7,4	n.a.	n.a.	4,5	13,9	6,8	2,1	8,3	n.a.	12,3	3,4	n.a.	n.a.	n.a.	5,7
14	13,1	10,1	5,0	6,5	n.a.	n.a.	8,0	9,7	1,7	18,0	10,4	n.a.	16,3	7,8	n.a.	n.a.	n.a.	7,9
Total	100,0	100,0	100,0	100,0	n.a.	n.a.	100,1	100,0	100,0	100,0	100,0	n.a.	100,0	100,0	n.a.	n.a.	n.a.	

Categories for classification:

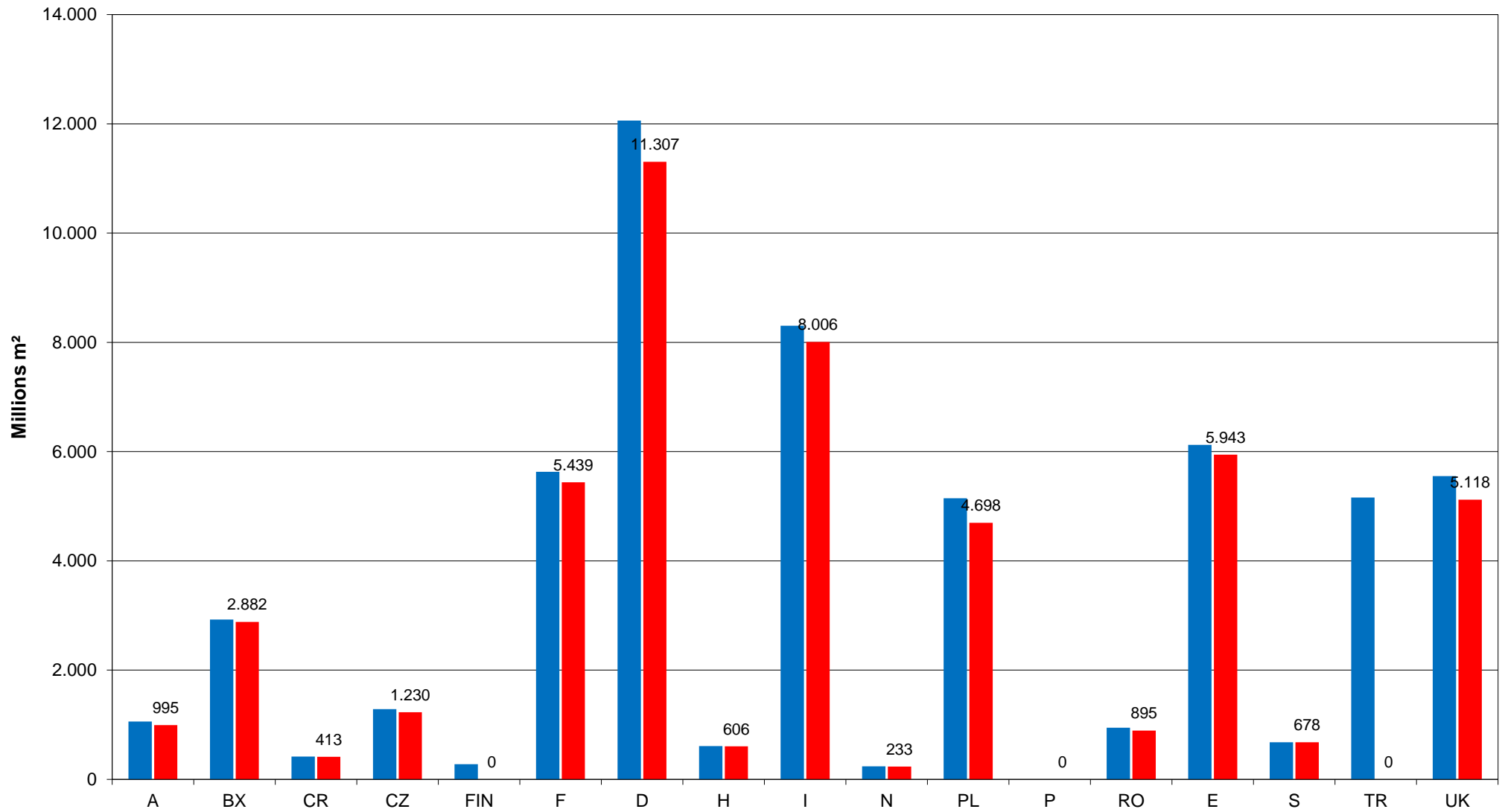
- | | |
|----------------------|-----------------------------|
| 1 Produce | 8 IT, Communication & Audio |
| 2 Fresh meat & fish | 9 Capital goods |
| 3 Dairy products | 10 Auxiliary goods |
| 4 Processed food | 11 Logistics |
| 5 Beverages | 12 Packaging for ecommerce |
| 6 FMCG | 13 Other paper products |
| 7 Long lasting goods | 14 Other excluding sheets |

Fluting Types in % of Total Shipments 2022

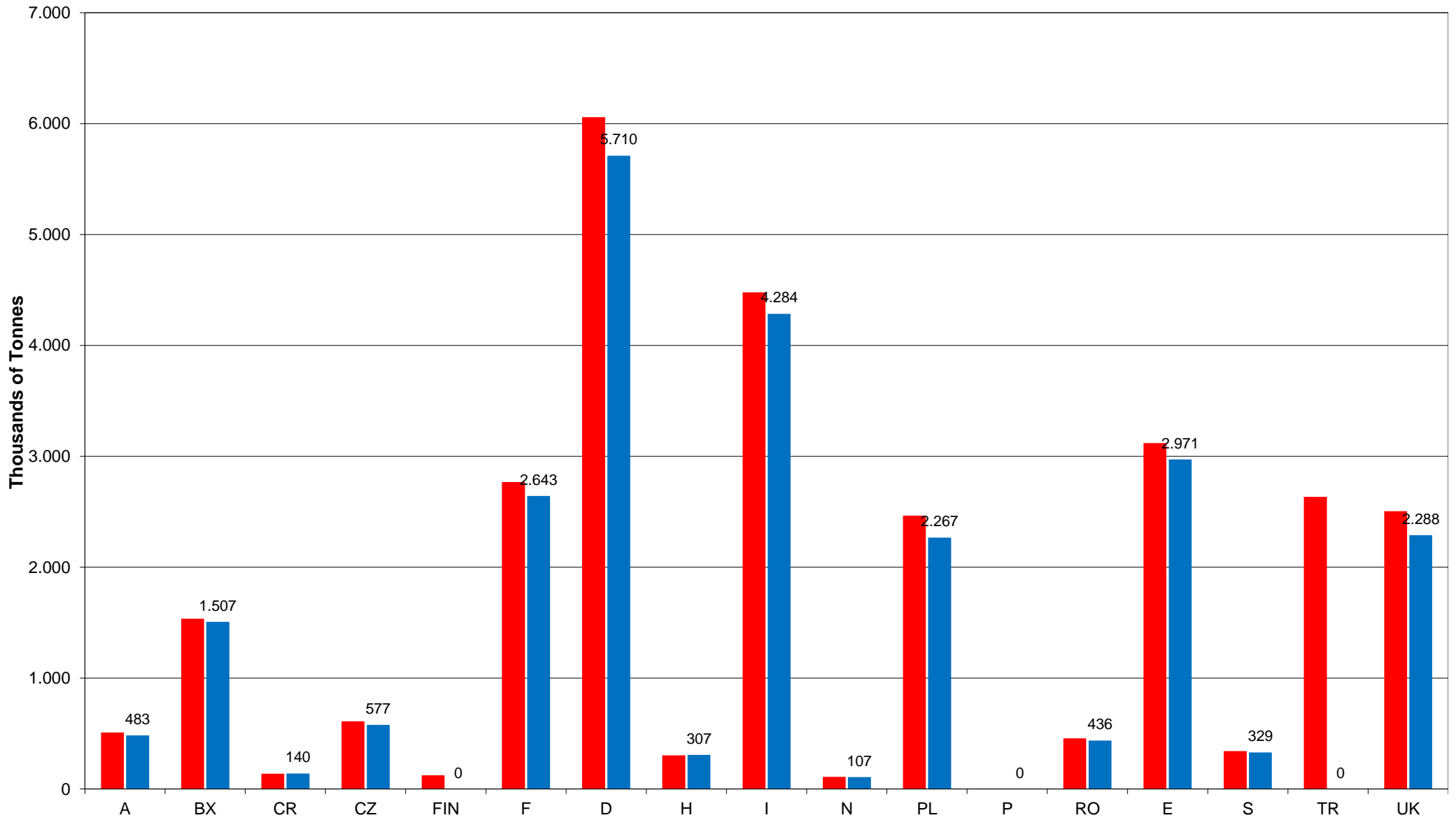
	B-flute	C-flute	BC-flute	E-flute	Micro-FI	Others
Austria	34,1	14,8	11,4	19,9	1,0	18,8
Benelux	47,5	12,7	10,4	7,2	0,7	21,5
Croatia	44,9	13,8	9,1	19,8	2,0	10,4
Czech Republic	48,5	9,2	12,2	16,3	n.a.	13,8
Finland	n.a.	n.a.	n.a.	n.a.	n.a.	n.a.
France	n.a.	n.a.	n.a.	n.a.	n.a.	n.a.
Germany	34,7	11,1	15,7	14,5	0,9	23,1
Hungary	36,7	13,1	14,9	15,8	6,2	13,3
Italy	n.a.	n.a.	n.a.	n.a.	n.a.	n.a.
Norway	49,2	28,0	6,6	14,2	0,4	1,6
Poland	42,2	14,2	11,1	16,5	n.a.	16,0
Portugal	n.a.	n.a.	n.a.	n.a.	n.a.	n.a.
Romania	39,8	17,4	17,1	14,9	0,4	10,4
Spain	n.a.	n.a.	n.a.	n.a.	n.a.	n.a.
Sweden	37,0	40,0	n.a.	n.a.	n.a.	23,0
Turkey	n.a.	n.a.	n.a.	n.a.	n.a.	n.a.
United Kingdom	n.a.	n.a.	n.a.	n.a.	n.a.	n.a.
Total Europe as weighted average	28,1	12,0	13,2	9,4	0,5	8,9

Countries	% of the Products by Number of Printing Colours										% Changes				
	2021					2022					2021 / 2022				
	0	1	2	3	> 3	0	1	2	3	> 3	0	1	2	3	> 3
Austria	35,5	34,5	11,6	7,8	10,6	35,9	35,3	10,7	6,6	11,5	1,1	2,3	-7,8	-15,4	8,5
Benelux	34,0	39,7	14,8	6,1	5,4	33,3	39,0	15,2	7,2	5,3	-2,2	-1,7	2,8	17,7	-1,3
Croatia	54,0	26,5	7,5	7,0	5,0	56,2	25,7	7,1	6,3	4,7	4,1	-3,0	-5,3	-10,0	-6,0
Czech Republic	34,2	39,0	14,0	6,4	6,4	32,3	41,3	12,9	6,3	7,2	-5,6	5,9	-7,9	-1,6	12,5
Finland	n.a.	n.a.	n.a.	n.a.	n.a.	n.a.	n.a.	n.a.	n.a.	n.a.	n.a.	n.a.	n.a.	n.a.	n.a.
France	n.a.	n.a.	n.a.	n.a.	n.a.	n.a.	n.a.	n.a.	n.a.	n.a.	n.a.	n.a.	n.a.	n.a.	n.a.
Germany	26,6	34,3	15,1	10,2	13,8	26,5	34,9	15,3	10,6	12,7	-0,4	1,7	1,3	3,9	-8,0
Hungary	45,6	27,2	11,9	6,0	9,3	47,0	25,5	12,3	5,9	9,3	3,1	-6,3	3,4	-1,7	0,0
Italy	n.a.	n.a.	n.a.	n.a.	n.a.	n.a.	n.a.	n.a.	n.a.	n.a.	n.a.	n.a.	n.a.	n.a.	n.a.
Norway	34,5	32,6	17,1	10,0	5,9	32,5	34,6	17,2	10,0	5,7	-5,7	6,3	0,7	-0,1	-3,5
Poland	46,1	25,1	12,7	6,5	9,7	49,6	24,4	11,3	6,1	8,6	7,6	-2,8	-10,7	-5,6	-11,2
Portugal	n.a.	n.a.	n.a.	n.a.	n.a.	n.a.	n.a.	n.a.	n.a.	n.a.	n.a.	n.a.	n.a.	n.a.	n.a.
Romania	40,4	35,9	11,6	5,4	6,7	40,0	37,9	10,7	5,1	6,2	-0,9	5,7	-7,4	-5,5	-7,9
Spain	n.a.	n.a.	n.a.	n.a.	n.a.	n.a.	n.a.	n.a.	n.a.	n.a.	n.a.	n.a.	n.a.	n.a.	n.a.
Sweden	n.a.	n.a.	n.a.	n.a.	n.a.	n.a.	n.a.	n.a.	n.a.	n.a.	n.a.	n.a.	n.a.	n.a.	n.a.
Turkey	n.a.	n.a.	n.a.	n.a.	n.a.	n.a.	n.a.	n.a.	n.a.	n.a.	n.a.	n.a.	n.a.	n.a.	n.a.
United Kingdom	n.a.	n.a.	n.a.	n.a.	n.a.	n.a.	n.a.	n.a.	n.a.	n.a.	n.a.	n.a.	n.a.	n.a.	n.a.

Shipments in Millions m²

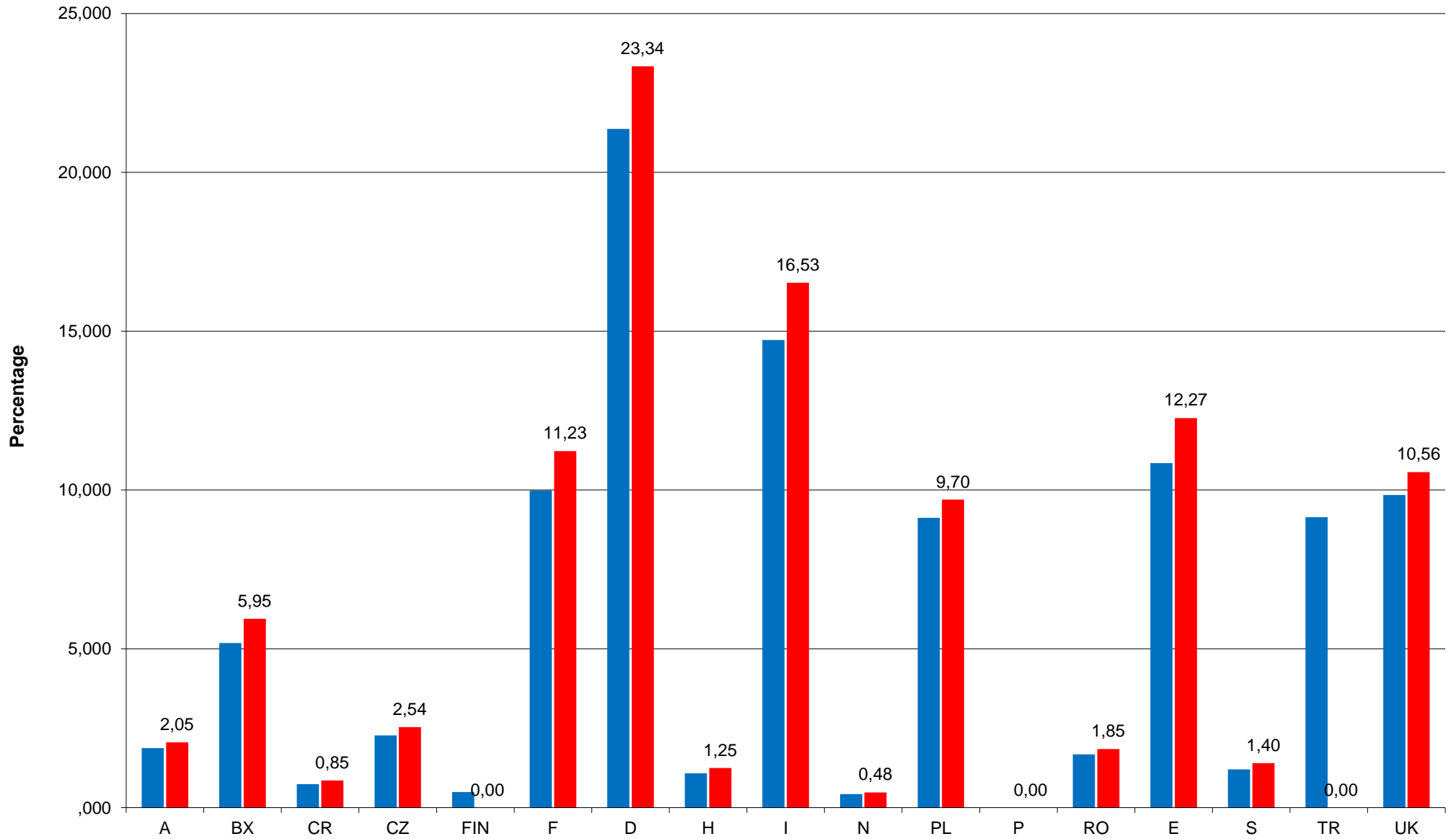


Shipments in '000 Tonnes



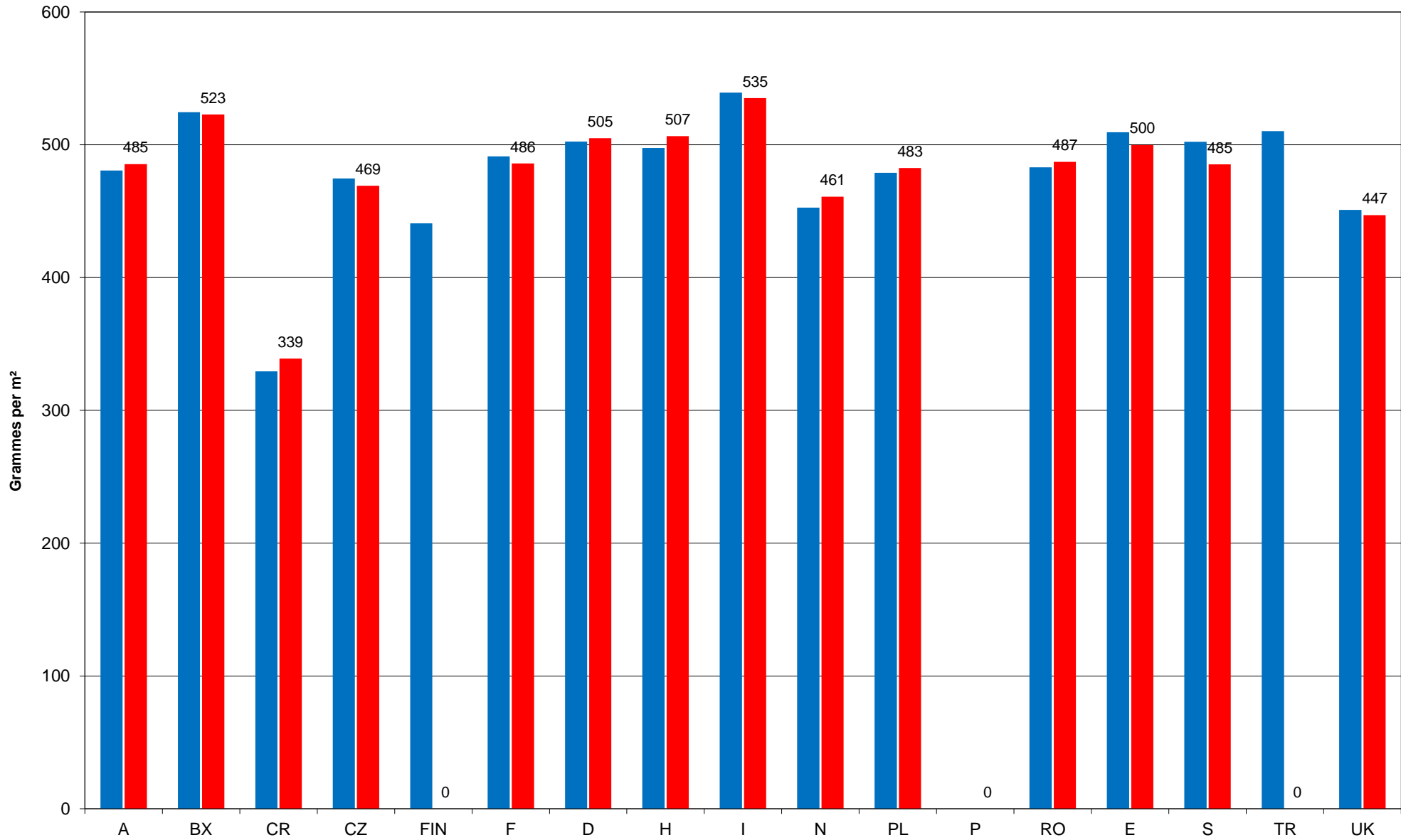
Relative Share of Total Shipments by Country (based on m²)

2021 2022



Average Weight of Corrugated Board by Country

■ 2021 ■ 2022



Fluting Type

