

# Annual Statistics 2017

## FEFCO ANNUAL STATISTICS 2017

<b><u>Tables:</u></b>	<b>Page</b>
Key Statistics	2
Total Shipments (Millions of m <sup>2</sup> ) (including Non-Members)	3
Total Shipments ('000 Tonnes) (including Non-Members)	4
Shipments of Member Companies (Millions of m <sup>2</sup> )	5
Shipments of Member Companies ('000 Tonnes)	6
Total Number of Companies (including Non-Members)	7
Total Number of Plants (including Non-Members)	8
Total Number of Corrugators (including Non-Members)	9
Average Weight of Board in g/m <sup>2</sup> (including Non-Members)	10
Die Cut Boxes (as % of Total Shipments in m <sup>2</sup> ) (including Non-Members & Sheetplants)	11
Shipments in Sheets (as % of Total Shipments in m <sup>2</sup> ) (including Non-Members)	12
Total Consumption of Raw Materials ('000 Tonnes) (including Non-Members)	13
Consumption of Kraftliner as % of Total Consumption of Raw Materials	14
Consumption of Brown Kraftliner as % of Total Consumption of Raw Materials	15
Consumption of Testliner, as % of Total Consumption of Raw Materials	16
Consumption of White Top Testliner	17
Consumption of Other Recycled Liner as % of Total Consumption of Raw Materials	18
Consumption of Semi-Chemical Fluting, as % of Total Consumption of Raw Materials	19
Consumption of Recycled Fluting as % of Total Consumption of Raw Materials	20
Total number of Personnel	21
Production per Head ('000 m <sup>2</sup> )	22
Nominal Working Time per Person (Hours per Year)	23
Classification by End Use	(seperate sheet) 24
Fluting Types in % of Total Shipments	(seperate sheet) 25
Printing Colours	(seperate sheet) 26
Diagramms	27-31

## FEFCO ANNUAL REPORT 2017 Key Statistics

	2016	2017	% Change
Total Shipments (Millions of m <sup>2</sup> ) (including Non-Members)	43.417	45.201	4,10
Total Shipments ('000 Tonnes) (including Non-Members)	22.620	23.407	3,50
Shipments of Member Companies (Millions of m <sup>2</sup> )	37.026	38.471	3,90
Shipments of Member Companies ( '000 Tonnes)	18.098	18.659	3,00
Total Number of Companies (including Non-Members)	380	384	1,00
Total Number of Plants (including Non-Members)	642	648	0,90
Average Weight of Board in g/m <sup>2</sup> (including Non-Members)	515	512	-0,60
Die Cut Boxes (as % of Total Shipments in m <sup>2</sup> ) (including Non-Members & Sheetplants)	42,8	43,7	5,60
Shipments in Sheets (as % of Total Shipments in m <sup>2</sup> ) (including Non-Members)	18,3	17,0	-4,10
Total Consumption of Raw Materials ( '000 Tonnes) (including Non-Members)	18.784	19.305	2,80
Consumption of Kraftliner as % of Total Consumption of Raw Materials	5,0	5,1	2,00
Consumption of Brown Kraftliner as % of Total Consumption of Raw Materials	14,9	15,0	0,70
Consumption of Testliner as % of Total Consumption of Raw Materials	27,1	27,5	1,50
Consumption of Other Recycled Liner as % of Total Consumption of Raw Materials	5,3	4,7	-12,80
Consumption of Semi-chemical Fluting as % of Total Consumption of Raw Materials	4,7	4,7	0
Consumption of Recycled Fluting as % of Total Consumption of Raw Materials	37,5	37,5	0
Total Personnel	98.327	100.576	2,20

### Total Shipments in Millions of m<sup>2</sup> (including Non-Members)

	2016	2017	% Change 2016/2017	Members Only
<b>Austria</b>	979	1.012	3,37	Y / Y
<b>Benelux</b>	n.a.	n.a.	n.a.	n.a. / n.a.
<b>Croatia</b>	n.a.	n.a.	n.a.	n.a. / n.a.
<b>Czech Republic</b>	1.097	1.113	1,46	N / N
<b>France</b>	5.420	5.530	2,03	N / N
<b>Germany</b>	9.915	10.323	4,11	N / N
<b>Italy</b>	6.574	6.759	2,81	N / N
<b>Norway</b>	213	216	1,41	Y / Y
<b>Poland</b>	3.854	4.071	5,63	N / N
<b>Romania</b>	745	777	4,30	Y / Y
<b>Spain</b>	4.952	5.201	5,03	N / N
<b>Sweden</b>	647	657	1,55	Y / Y
<b>Switzerland</b>	450	461	2,44	Y / Y
<b>Turkey</b>	3.886	4.269	9,86	N / N
<b>United Kingdom</b>	4.685	4.812	2,71	N / N
<b>TOTAL EUROPE</b>	<b>43.417</b>	<b>45.201</b>	<b>4,10</b>	

### Total Shipments in 000's Tonnes (including Non-Members)

	2016	2017	% Change 2016/2017
<b>Austria</b>	463	478	3,24
<b>Benelux</b>	n.a.	n.a.	n.a.
<b>Croatia</b>	264	264	0
<b>Czech Republic</b>	538	545	1,30
<b>France</b>	2.844	2.847	0,11
<b>Germany</b>	5.115	5.299	3,60
<b>Italy</b>	3.719	3.791	1,94
<b>Norway</b>	103	102	-0,97
<b>Poland</b>	1.910	2.008	5,13
<b>Romania</b>	367	384	4,63
<b>Spain</b>	2.661	2.775	4,28
<b>Sweden</b>	314	319	1,59
<b>Switzerland</b>	233	239	2,58
<b>Turkey</b>	2.022	2.241	10,83
<b>United Kingdom</b>	2.067	2.115	2,32
<b>TOTAL EUROPE</b>	<b>22.620</b>	<b>23.407</b>	<b>3,50</b>

## Shipments of Member Companies in Millions of m<sup>2</sup>

	2016	2017	% Change 2016/2017
<b>Austria</b>	979	1.012	3,37
<b>Benelux</b>	1.951	1.965	0,72
<b>Croatia</b>	267	n.a.	n.a.
<b>Czech Republic</b>	715	763	6,71
<b>France</b>	3.907	3.985	2,00
<b>Germany</b>	7.591	7.819	3,00
<b>Italy</b>	6.019	6.287	4,45
<b>Norway</b>	213	216	1,41
<b>Poland</b>	3.386	3.576	5,61
<b>Romania</b>	745	777	4,30
<b>Spain</b>	3.589	3.770	5,04
<b>Sweden</b>	647	657	1,55
<b>Switzerland</b>	450	461	2,44
<b>Turkey</b>	2.937	3.170	7,93
<b>United Kingdom</b>	3.897	4.013	2,98
<b>Membership Total</b>	<b>37.293</b>	<b>38.471</b>	<b>3,90</b>

## Shipments of Member Companies in 000's Tonnes

	Membership 2016		Membership 2017	
	Tonnes	% of Total Shipments	Tonnes	% of Total Shipments
<b>Austria</b>	463	100,00	478	100,00
<b>Benelux</b>	1.025	n.a.	1.035	n.a.
<b>Croatia</b>	123	46,59	n.a.	n.a.
<b>Czech Republic</b>	347	64,50	366	67,16
<b>France</b>	2.025	71,20	2.027	71,20
<b>Germany</b>	3.879	75,84	4.012	75,71
<b>Italy</b>	3.423	92,04	3.567	94,09
<b>Norway</b>	103	100,00	102	100,00
<b>Poland</b>	1.662	87,02	1.747	87,00
<b>Romania</b>	367	100,00	384	100,00
<b>Spain</b>	1.929	72,49	2.011	72,47
<b>Sweden</b>	314	100,00	319	100,00
<b>Switzerland</b>	233	100,00	239	100,00
<b>Turkey</b>	1.533	75,82	1.664	74,25
<b>United Kingdom</b>	1.697	82,10	1.743	82,41
<b>Membership Total</b>	<b>19.123</b>	<b>80,00</b>	<b>19.694</b>	<b>80,60</b>

## Total Number of Companies (including Non-Members)

	2016	2017
<b>Austria</b>	7	7
<b>Benelux</b>	n.a.	n.a.
<b>Croatia</b>	5	5
<b>Czech Republic</b>	7	7
<b>France</b>	17	17
<b>Germany</b>	45	45
<b>Italy</b>	51	52
<b>Norway</b>	3	3
<b>Poland</b>	40	40
<b>Romania</b>	10	11
<b>Spain</b>	71	71
<b>Sweden</b>	4	4
<b>Switzerland</b>	6	6
<b>Turkey</b>	86	88
<b>United Kingdom</b>	28	28
<b>TOTAL EUROPE</b>	<b>380</b>	<b>384</b>



### Total Number of Plants (including Non-Members)

	2016	2017
<b>Austria</b>	9	9
<b>Benelux</b>	n.a.	n.a.
<b>Croatia</b>	5	5
<b>Czech Republic</b>	10	10
<b>France</b>	62	62
<b>Germany</b>	125	125
<b>Italy</b>	81	82
<b>Norway</b>	3	3
<b>Poland</b>	53	55
<b>Romania</b>	11	12
<b>Spain</b>	89	89
<b>Sweden</b>	10	10
<b>Switzerland</b>	8	8
<b>Turkey</b>	108	110
<b>United Kingdom</b>	68	68
<b>TOTAL EUROPE</b>	<b>642</b>	<b>648</b>

## Total Number of Corrugators (including Non-Members)

	2017			Result
	<2m	>2 <2,5m	> 2,5m	
<b>Austria</b>	2	6	2	10
<b>Benelux</b>	1	12	6	19
<b>Croatia</b>	n.a.	n.a.	n.a.	n.a.
<b>Czech Republic</b>	1	8	1	10
<b>France</b>	n.a.	n.a.	n.a.	n.a.
<b>Germany</b>	6	70	28	104
<b>Italy</b>	7	72	15	94
<b>Norway</b>	n.a.	2	1	3
<b>Poland</b>	n.a.	n.a.	n.a.	n.a.
<b>Romania</b>	1	11	n.a.	12
<b>Spain</b>	10	76	8	94
<b>Sweden</b>	n.a.	10	n.a.	10
<b>Switzerland</b>	2	6	n.a.	8
<b>Turkey</b>	n.a.	n.a.	n.a.	n.a.
<b>United Kingdom</b>	24	44	9	77
<b>TOTAL EUROPE</b>	<b>54</b>	<b>317</b>	<b>70</b>	<b>441</b>

**Average Weight of Board in g/m<sup>2</sup>  
(including Non-Members)**

	<b>2016</b>	<b>2017</b>
<b>Austria</b>	473	472
<b>Benelux</b>	n.a.	n.a.
<b>Croatia</b>	n.a.	n.a.
<b>Czech Republic</b>	490	490
<b>France</b>	525	515
<b>Germany</b>	516	513
<b>Italy</b>	566	561
<b>Norway</b>	484	472
<b>Poland</b>	496	493
<b>Romania</b>	493	494
<b>Spain</b>	537	534
<b>Sweden</b>	485	486
<b>Switzerland</b>	518	518
<b>Turkey</b>	520	525
<b>United Kingdom</b>	441	440
<b>TOTAL EUROPE as weighted average</b>	<b>515</b>	<b>512</b>

**Die Cut Boxes**  
**(as % of Total Shipments in m<sup>2</sup>)**  
**(including Non-Members & Sheetplants)**

	<b>2016</b>	<b>2017</b>
<b>Austria</b>	51,0	51,4
<b>Benelux</b>	n.a.	35,4
<b>Croatia</b>	n.a.	39,3
<b>Czech Republic</b>	36,5	49,3
<b>France</b>	n.a.	n.a.
<b>Germany</b>	47,8	48,7
<b>Italy</b>	n.a.	n.a.
<b>Norway</b>	58,6	57,5
<b>Poland</b>	38,8	38,1
<b>Romania</b>	35,0	38,0
<b>Spain</b>	n.a.	n.a.
<b>Sweden</b>	n.a.	n.a.
<b>Switzerland</b>	60,7	47,6
<b>Turkey</b>	n.a.	n.a.
<b>United Kingdom</b>	34,1	34,6
<b>TOTAL EUROPE</b> as weighted average	<b>42,8</b>	<b>43,7</b>

**Shipments in Sheets  
(as % of Total Shipments in m<sup>2</sup>)  
(including Non-Members)**

	2016	2017
<b>Austria</b>	11,5	11,6
<b>Benelux</b>	n.a.	2,1
<b>Croatia</b>	n.a.	36,1
<b>Czech Republic</b>	33,0	9,6
<b>France</b>	n.a.	n.a.
<b>Germany</b>	9,3	8,7
<b>Italy</b>	n.a.	n.a.
<b>Norway</b>	7,6	7,9
<b>Poland</b>	29,5	29,4
<b>Romania</b>	29,0	28,0
<b>Spain</b>	n.a.	n.a.
<b>Sweden</b>	6,2	6,5
<b>Switzerland</b>	7,1	2,4
<b>Turkey</b>	n.a.	n.a.
<b>United Kingdom</b>	27,8	28,5
<b>TOTAL EUROPE as weighted average</b>	<b>18,3</b>	<b>17,0</b>

### Total Consumption of Raw Materials in 000's Tonnes (including Non-Members)

	2016	2017	% Change 2016/2017
<b>Austria</b>	535	562	5,05
<b>Benelux</b>	n.a.	n.a.	n.a.
<b>Croatia</b>	n.a.	33	n.a.
<b>Czech Republic</b>	591	435	-26,40
<b>France</b>	n.a.	n.a.	n.a.
<b>Germany</b>	5.432	5.598	3,06
<b>Italy</b>	3.830	3.905	1,96
<b>Norway</b>	112	111	-0,89
<b>Poland</b>	1.987	2.088	5,08
<b>Romania</b>	446	450	0,90
<b>Spain</b>	2.951	3.078	4,30
<b>Sweden</b>	359	363	1,11
<b>Switzerland</b>	212	250	17,92
<b>Turkey</b>	n.a.	n.a.	n.a.
<b>United Kingdom</b>	2.329	2.465	5,84
<b>TOTAL EUROPE</b>	<b>18.784</b>	<b>19.338</b>	<b>2,80</b>

**Consumption of Kraftliner  
(as % of the Total Consumption of Raw Materials)  
(including white and coloured kraft)**

	2016	2017
<b>Austria</b>	6,5	8,6
<b>Benelux</b>	n.a.	6,0
<b>Croatia</b>	n.a.	1,0
<b>Czech Republic</b>	4,2	3,4
<b>France</b>	n.a.	n.a.
<b>Germany</b>	5,3	5,2
<b>Italy</b>	4,8	6,2
<b>Norway</b>	17,5	17,7
<b>Poland</b>	1,5	1,6
<b>Romania</b>	0,7	1,0
<b>Spain</b>	5,3	5,7
<b>Sweden</b>	15,6	17,5
<b>Switzerland</b>	7,2	7,6
<b>Turkey</b>	1,2	1,4
<b>United Kingdom</b>	5,5	2,8
<b>TOTAL EUROPE as weighted average</b>	<b>5,0</b>	<b>5,1</b>

**Consumption of Brown Kraftliner  
(as % of the Total Consumption of Raw Materials)**

	<b>2016</b>	<b>2017</b>
<b>Austria</b>	13,6	13,8
<b>Benelux</b>	n.a.	13,8
<b>Croatia</b>	n.a.	10,0
<b>Czech Republic</b>	8,6	9,2
<b>France</b>	n.a.	n.a.
<b>Germany</b>	14,6	14,5
<b>Italy</b>	19,8	19,5
<b>Norway</b>	14,1	14,1
<b>Poland</b>	8,2	8,1
<b>Romania</b>	10,3	10,5
<b>Spain</b>	15,8	15,4
<b>Sweden</b>	15,6	17,5
<b>Switzerland</b>	17,8	17,6
<b>Turkey</b>	18,6	18,0
<b>United Kingdom</b>	14,2	16,0
<b>TOTAL EUROPE as weighted average</b>	<b>14,9</b>	<b>15,0</b>



**Consumption of Testliner  
(as % of the Total Consumption of Raw Materials)**

	<b>2016</b>	<b>2017</b>
<b>Austria</b>	29,2	27,4
<b>Benelux</b>	n.a.	37,2
<b>Croatia</b>	n.a.	33,0
<b>Czech Republic</b>	36,0	36,2
<b>France</b>	n.a.	n.a.
<b>Germany</b>	30,8	31,6
<b>Italy</b>	14,4	15,5
<b>Norway</b>	27,4	27,1
<b>Poland</b>	35,5	35,3
<b>Romania</b>	35,2	36,9
<b>Spain</b>	20,4	20,4
<b>Sweden</b>	16,1	15,3
<b>Switzerland</b>	34,9	35,3
<b>Turkey</b>	18,8	18,1
<b>United Kingdom</b>	37,3	37,2
<b>TOTAL EUROPE as weighted average</b>	<b>27,1</b>	<b>27,5</b>

**Consumption of White Top Testliner  
(as % of the Total Consumption of Raw Materials)**

	<b>2016</b>	<b>2017</b>
<b>Austria</b>	6,7	5,7
<b>Benelux</b>	n.a.	9,0
<b>Croatia</b>	n.a.	9,0
<b>Czech Republic</b>	9,4	9,3
<b>France</b>	n.a.	n.a.
<b>Germany</b>	8,5	8,3
<b>Italy</b>	4,7	4,7
<b>Norway</b>	2,9	2,8
<b>Poland</b>	11,7	12,2
<b>Romania</b>	5,6	5,7
<b>Spain</b>	5,3	5,6
<b>Sweden</b>	n.a.	n.a.
<b>Switzerland</b>	n.a.	3,1
<b>Turkey</b>	5,5	5,3
<b>United Kingdom</b>	n.a.	n.a.
<b>TOTAL EUROPE as weighted average</b>	<b>7,2</b>	<b>7,3</b>

**Consumption of schrenz and other liners  
(as % of the Total Consumption of Raw Materials)**

	2016	2017
Austria	3,6	3,1
Benelux	n.a.	1,7
Croatia	n.a.	6,0
Czech Republic	0,7	0,4
France	n.a.	n.a.
Germany	1,6	1,5
Italy	9,9	7,7
Norway	0,7	0,6
Poland	2,3	2,3
Romania	10,5	9,8
Spain	7,8	7,4
Sweden	16,1	15,3
Switzerland	3,6	1,3
Turkey	6,1	8,0
United Kingdom	n.a.	n.a.
<b>TOTAL EUROPE as weighted average</b>	<b>5,3</b>	<b>4,7</b>

**Consumption of Semi-Chemical Fluting  
(as % of the Total Consumption of Raw Materials)**

	2016	2017
Austria	8,6	8,0
Benelux	n.a.	1,1
Croatia	n.a.	n.a.
Czech Republic	0,8	0,7
France	n.a.	n.a.
Germany	1,3	1,1
Italy	10,7	9,9
Norway	13,7	13,9
Poland	1,3	1,1
Romania	1,0	1,0
Spain	7,6	7,5
Sweden	8,6	6,1
Switzerland	5,4	28,6
Turkey	17,7	n.a.
United Kingdom	1,9	1,7
<b>TOTAL EUROPE as weighted average</b>	<b>4,7</b>	<b>4,7</b>

**Consumption of wellenstoff and other fluting  
(as % of the Total Consumption of Raw Materials)**

	<b>2016</b>	<b>2017</b>
<b>Austria</b>	31,8	33,4
<b>Benelux</b>	n.a.	31,2
<b>Croatia</b>	n.a.	41,0
<b>Czech Republic</b>	40,3	40,8
<b>France</b>	n.a.	n.a.
<b>Germany</b>	37,9	37,8
<b>Italy</b>	35,7	36,5
<b>Norway</b>	23,7	23,8
<b>Poland</b>	39,5	39,4
<b>Romania</b>	36,7	35,1
<b>Spain</b>	37,8	38,0
<b>Sweden</b>	28,0	28,3
<b>Switzerland</b>	31,1	6,5
<b>Turkey</b>	32,1	49,2
<b>United Kingdom</b>	41,1	42,3
<b>TOTAL EUROPE as weighted average</b>	<b>37,5</b>	<b>37,5</b>

## Total Number of Personnel

	2016		2017	
	Production Employees	Total Employees	Production Employees	Total Employees
<b>Austria</b>	1.428	1.985	1.435	1.968
<b>Benelux</b>	2.597	3.896	2.590	3.885
<b>Croatia</b>	n.a.	n.a.	162	188
<b>Czech Republic</b>	1.217	1.502	1.306	1.602
<b>France</b>	7.720	11.600	7.720	11.600
<b>Germany</b>	13.882	19.200	14.363	19.921
<b>Italy</b>	5.910	13.310	6.080	13.690
<b>Norway</b>	328	510	325	508
<b>Poland</b>	4.975	7.197	5.174	7.613
<b>Romania</b>	1.360	1.850	1.400	1.910
<b>Spain</b>	8.114	10.746	8.488	11.136
<b>Sweden</b>	1.144	1.625	1.160	1.663
<b>Switzerland</b>	844	1.279	679	1.031
<b>Turkey</b>	5.751	7.472	5.993	7.692
<b>United Kingdom</b>	10.662	16.155	10.796	16.357
<b>TOTAL EUROPE</b>	<b>65.932</b>	<b>98.327</b>	<b>67.671</b>	<b>100.764</b>

### Production per Head in 1000 m<sup>2</sup>

	2016	2017
<b>Austria</b>	686	705
<b>Benelux</b>	n.a.	n.a.
<b>Croatia</b>	n.a.	n.a.
<b>Czech Republic</b>	901	852
<b>France</b>	702	716
<b>Germany</b>	714	719
<b>Italy</b>	1.112	1.112
<b>Norway</b>	649	665
<b>Poland</b>	775	787
<b>Romania</b>	548	555
<b>Spain</b>	610	613
<b>Sweden</b>	566	566
<b>Switzerland</b>	533	679
<b>Turkey</b>	676	712
<b>United Kingdom</b>	439	446
<b>TOTAL EUROPE</b>	<b>659</b>	<b>668</b>

## Nominal Working Time and Productivity per Head

	Working Time [hours / year]		Productivity [m <sup>2</sup> /man hour]	
	2016	2017	2016	2017
<b>Austria</b>	1.687	1.691	406	417
<b>Benelux</b>	n.a.	n.a.	n.a.	n.a.
<b>Croatia</b>	n.a.	2.008	n.a.	n.a.
<b>Czech Republic</b>	1.792	1.812	503	470
<b>France</b>	n.a.	n.a.	n.a.	n.a.
<b>Germany</b>	1.850	1.850	386	388
<b>Italy</b>	2.016	2.000	552	556
<b>Norway</b>	1.725	1.725	376	385
<b>Poland</b>	2.016	2.000	384	393
<b>Romania</b>	1.880	1.992	291	279
<b>Spain</b>	1.768	1.768	345	347
<b>Sweden</b>	1.486	1.486	381	381
<b>Switzerland</b>	2.106	2.016	253	337
<b>Turkey</b>	2.008	2.024	337	352
<b>United Kingdom</b>	1.710	1.710	257	261
<b>TOTAL EUROPE</b>	<b>1.837</b>	<b>1.853</b>	<b>373</b>	<b>381</b>



## Classification of shipment by end-use sector, as a percentage of turnover 2017

	Austria	Benelux	Croatia	Czech Republic	France	Germany	Italy	Norway	Poland	Romania	Spain	Sweden	Switzerland	Turkey	United Kingdom		Weighted Average
<b>1</b>	25,2	35,1	28,4	24,1	n.a.	29,0	9,6	30,0	32,3	27,0	16,4	30,7	41,3	32,5	n.a.	n.a.	<b>27,4</b>
<b>2</b>	10,5	13,6	8,8	2,7	n.a.	3,4	39,0	27,9	6,5	5,0	23,3	2,0	4,6	5,1	n.a.	n.a.	<b>9,3</b>
<b>3</b>	7,9	6,1	5,7	5,4	n.a.	4,8	11,7	5,1	4,6	7,0	15,0	5,6	5,7	5,4	n.a.	n.a.	<b>7,1</b>
<b>4</b>	0,1	1,1	0,0	1,2	n.a.	0,5	0,1	0,3	0,6	1,0	1,6	0,0	0,8	1,2	n.a.	n.a.	<b>0,8</b>
<b>Subtotal</b>	<b>43,7</b>	<b>55,9</b>	<b>42,9</b>	<b>33,4</b>	<b>n.a.</b>	<b>37,7</b>	<b>60,4</b>	<b>63,3</b>	<b>44,0</b>	<b>40,0</b>	<b>56,3</b>	<b>38,3</b>	<b>52,4</b>	<b>44,2</b>	<b>n.a.</b>	<b>n.a.</b>	<b>44,7</b>
<b>5</b>	1,3	1,1	0,2	0,3	n.a.	1,8	2,1	0,7	1,7	1,9	1,0	0,6	1,1	3,6	n.a.	n.a.	<b>1,4</b>
<b>6</b>	2,1	1,1	1,6	2,1	n.a.	1,7	1,6	3,5	4,6	19,0	1,0	5,8	0,7	2,1	n.a.	n.a.	<b>2,6</b>
<b>7</b>	3,2	4,2	1,4	4,6	n.a.	4,2	14,8	6,3	3,5	2,2	2,5	13,0	4,0	3,1	n.a.	n.a.	<b>4,1</b>
<b>8</b>	3,9	3,5	0,4	1,2	n.a.	5,7	3,8	3,6	2,6	2,0	2,0	5,0	6,4	2,3	n.a.	n.a.	<b>3,9</b>
<b>9</b>	2,0	2,1	4,9	9,1	n.a.	4,6	6,3	0,6	6,4	1,8	3,0	0,0	2,8	2,9	n.a.	n.a.	<b>4,1</b>
<b>10</b>	4,1	3,3	2,7	3,5	n.a.	3,7	0,2	0,0	0,4	1,1	1,0	0,0	1,2	1,3	n.a.	n.a.	<b>2,4</b>
<b>11</b>	2,2	1,1	0,1	4,9	n.a.	1,2	3,8	0,2	1,3	1,9	3,0	0,9	0,4	4,8	n.a.	n.a.	<b>1,7</b>
<b>12</b>	8,5	1,1	2,2	1,3	n.a.	3,2	1,2	0,7	0,5	0,5	0,5	3,3	1,3	0,5	n.a.	n.a.	<b>1,9</b>
<b>13</b>	2,7	1,2	0,7	1,0	n.a.	1,9	0,1	0,5	0,6	5,0	1,4	0,0	1,1	1,1	n.a.	n.a.	<b>1,5</b>
<b>14</b>	2,1	0,4	0,0	1,5	n.a.	2,6	0,4	1,5	0,9	1,4	1,9	1,3	2,4	0,4	n.a.	n.a.	<b>1,8</b>
<b>15</b>	0,1	0,1	0,0	5,9	n.a.	0,4	0,6	0,3	4,3	0,2	3,5	0,0	0,2	0,3	n.a.	n.a.	<b>1,7</b>
<b>16</b>	0,3	1,0	0,3	0,2	n.a.	1,1	0,4	0,1	1,6	4,0	1,5	0,0	0,5	4,8	n.a.	n.a.	<b>1,2</b>
<b>17</b>	0,9	1,3	0,2	2,6	n.a.	2,8	1,1	4,7	0,2	0,0	1,5	0,0	0,8	4,1	n.a.	n.a.	<b>1,8</b>
<b>18</b>	0,2	0,4	0,0	0,0	n.a.	0,5	0,3	0,0	0,1	0,1	0,9	0,0	0,4	0,0	n.a.	n.a.	<b>0,5</b>
<b>19</b>	1,5	1,7	1,2	4,9	n.a.	0,0	0,2	1,1	3,8	1,0	1,0	0,0	7,5	4,6	n.a.	n.a.	<b>1,1</b>
<b>20</b>	0,5	0,0	0,0	2,8	n.a.	1,0	0,5	0,0	0,1	2,0	2,0	0,0	0,8	0,1	n.a.	n.a.	<b>1,0</b>
<b>21</b>	2,8	2,3	1,4	7,2	n.a.	3,7	1,0	0,0	1,2	1,0	2,5	0,0	0,9	0,0	n.a.	n.a.	<b>2,8</b>
<b>22</b>	13,0	15,1	39,2	7,6	n.a.	16,2	0,0	1,3	12,3	12,0	11,4	21,6	10,2	15,0	n.a.	n.a.	<b>14,4</b>
<b>23</b>	4,9	3,1	0,6	5,9	n.a.	6,0	1,2	11,6	9,9	2,9	2,1	10,2	4,9	4,8	n.a.	n.a.	<b>5,5</b>
<b>Subtotal</b>	<b>56,3</b>	<b>44,1</b>	<b>57,1</b>	<b>66,6</b>	<b>n.a.</b>	<b>62,3</b>	<b>39,6</b>	<b>36,7</b>	<b>56,0</b>	<b>60,0</b>	<b>43,7</b>	<b>61,7</b>	<b>47,6</b>	<b>55,8</b>	<b>n.a.</b>	<b>n.a.</b>	<b>55,3</b>
<b>Total</b>	<b>100,0</b>	<b>100,0</b>	<b>100,0</b>	<b>100,0</b>	<b>n.a.</b>	<b>100,0</b>	<b>100,0</b>	<b>100,0</b>	<b>100,0</b>	<b>100,0</b>	<b>100,0</b>	<b>100,0</b>	<b>100,0</b>	<b>100,0</b>	<b>n.a.</b>	<b>n.a.</b>	

### Categories for classification:

- |  |   |
|--|---|
| 1 Foodstuffs                                     | 13 Machines and parts   |
| 2 Agricultural Produce and Fresh Food            | 14 Electrical equipment and accessories (except domestic appliance) |
| 3 Beverages                                      | 15 Audio, video and communication equipments                        |
| 4 Tobacco Products                               | 16 Electric appliances  |
| 5 Textiles, clothing, leather goods              | 17 Means of transport   |
| 6 Wooden goods and furniture                     | 18 Precision instruments, optical equipment and watches             |
| 7 Paper goods and printed matter                 | 19 Other industrial product   |
| 8 Chemicals and related products                 | 20 Sportswear and accessories, toys                                 |
| 9 Detergents, soaps, perfumes, cosmetics, etc.   | 21 Direct mail companies, dispatching houses                        |
| 10 Rubber goods                                  | 22 Corrugated Board converters (sheet plans)                        |
| 11 Glassware, ceramicware and other non minerals | 23 All other not classified above                                   |
| 12 Metalware                                     |   |

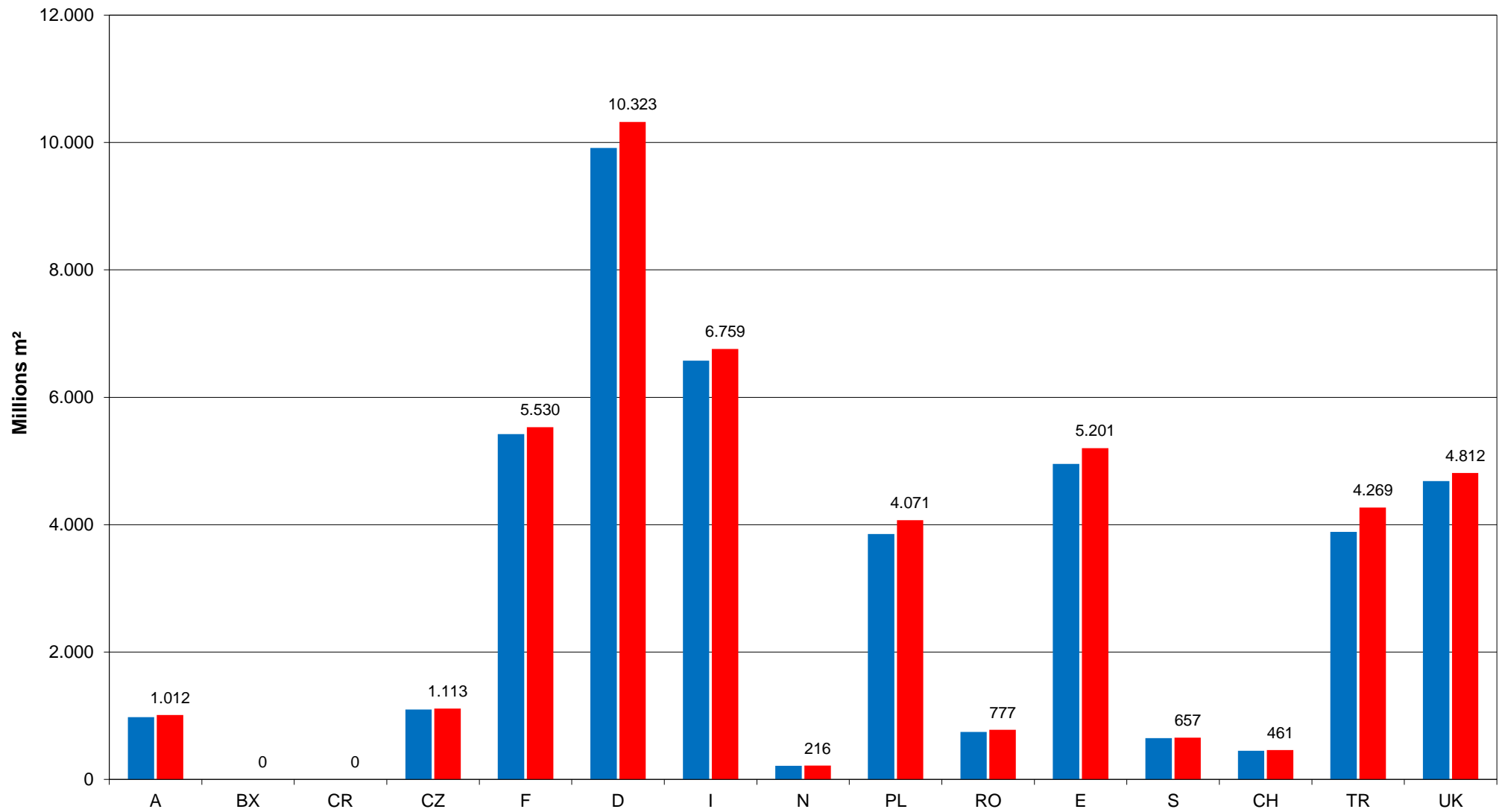
## Fluting Types in % of Total Shipments 2017

	<b>B-flute</b>	<b>C-flute</b>	<b>BC-flute</b>	<b>E-flute</b>	<b>Micro-FI</b>	<b>Others</b>
<b>Austria</b>	37,5	17,1	11,6	18,6	1,2	14,0
<b>Benelux</b>	46,6	13,8	11,3	4,9	0,5	22,9
<b>Croatia</b>	40,0	23,2	19,4	14,1	0,0	3,3
<b>Czech Republic</b>	51,2	6,9	12,0	18,6	0,0	11,3
<b>France</b>	<b>n.a.</b>	<b>n.a.</b>	<b>n.a.</b>	<b>n.a.</b>	<b>n.a.</b>	<b>n.a.</b>
<b>Germany</b>	36,9	12,7	16,3	14,0	2,8	17,3
<b>Italy</b>	<b>n.a.</b>	<b>n.a.</b>	<b>n.a.</b>	<b>n.a.</b>	<b>n.a.</b>	<b>n.a.</b>
<b>Norway</b>	46,6	29,1	6,1	15,2	0,7	2,3
<b>Poland</b>	44,7	15,9	9,7	16,2	0,2	13,3
<b>Romania</b>	37,0	23,0	22,0	14,0	0,0	4,0
<b>Spain</b>	<b>n.a.</b>	<b>n.a.</b>	<b>n.a.</b>	<b>n.a.</b>	<b>n.a.</b>	<b>n.a.</b>
<b>Sweden</b>	<b>n.a.</b>	<b>n.a.</b>	<b>n.a.</b>	<b>n.a.</b>	<b>n.a.</b>	<b>n.a.</b>
<b>Switzerland</b>	<b>n.a.</b>	<b>n.a.</b>	<b>n.a.</b>	<b>n.a.</b>	<b>n.a.</b>	<b>n.a.</b>
<b>Turkey</b>	20,2	19,2	51,9	6,1	0,0	2,6
<b>United Kingdom</b>	<b>n.a.</b>	<b>n.a.</b>	<b>n.a.</b>	<b>n.a.</b>	<b>n.a.</b>	<b>n.a.</b>
<b>Total Europe as weighted average</b>	35,9	15,0	21,7	13,3	1,4	12,6

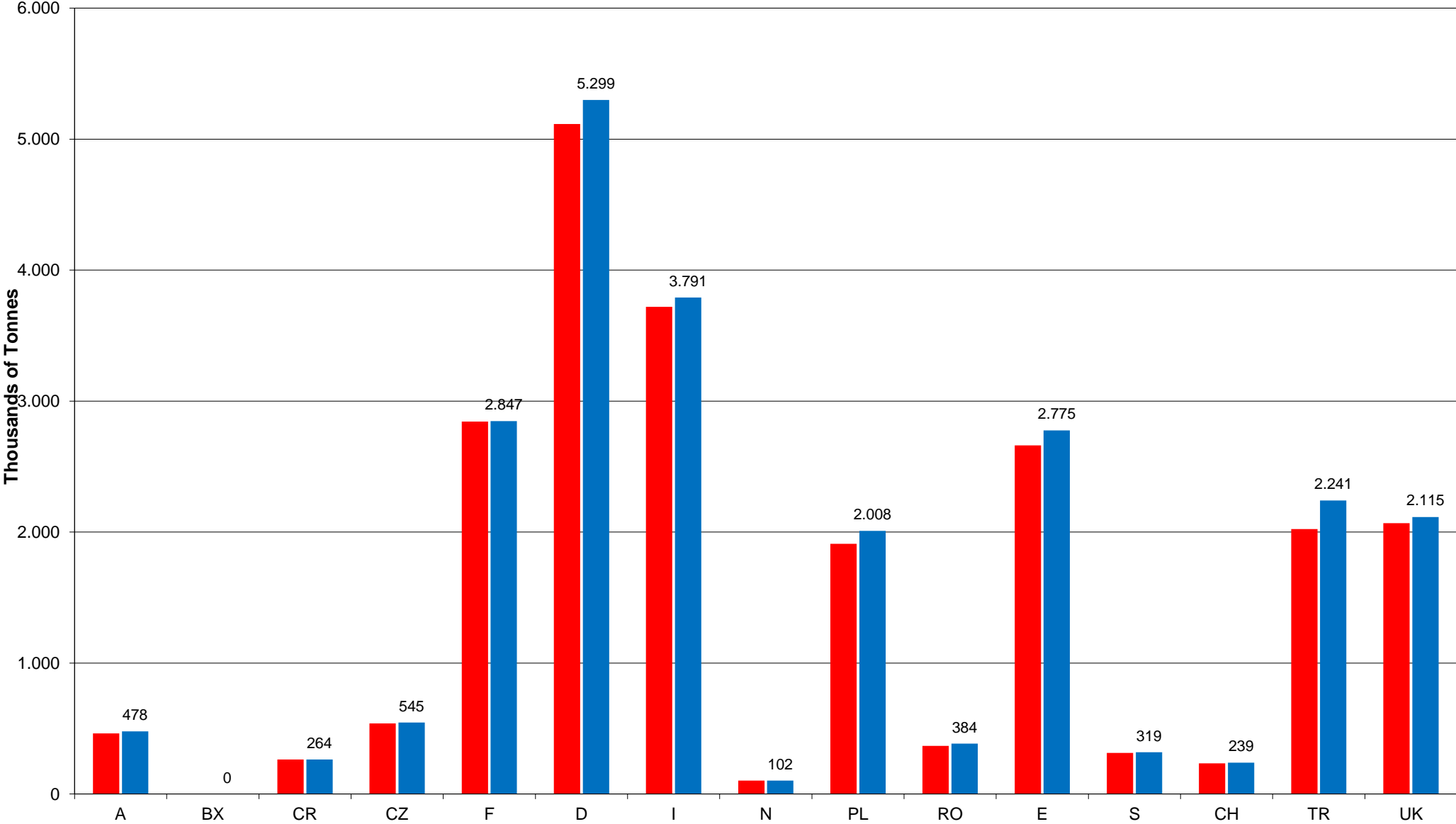
Countries	% of the Products by Number of Printing Colours										% Changes				
	2016					2017					2016 / 2017				
	0	1	2	3	> 3	0	1	2	3	> 3	0	1	2	3	> 3
Austria	38,0	35,1	10,1	7,5	9,3	35,9	35,9	10,2	7,8	10,2	-5,5	2,3	1,0	4,0	9,7
Benelux	0,0	0,0	0,0	0,0	0,0	34,5	40,0	14,1	5,4	6,0	n.a.	n.a.	n.a.	n.a.	n.a.
Croatia	0,0	0,0	0,0	0,0	0,0	61,3	18,2	8,3	8,3	3,9	n.a.	n.a.	n.a.	n.a.	n.a.
Czech Republic	29,4	41,5	16,2	5,8	7,1	29,8	40,4	15,0	6,3	8,5	1,4	-2,7	-7,4	8,6	19,7
France	n.a.	n.a.	n.a.	n.a.	n.a.	n.a.	n.a.	n.a.	n.a.	n.a.	n.a.	n.a.	n.a.	n.a.	n.a.
Germany	28,7	33,8	14,9	10,8	11,8	26,8	34,6	15,3	10,3	13,0	-6,6	2,4	2,7	-4,6	10,2
Italy	n.a.	n.a.	n.a.	n.a.	n.a.	n.a.	n.a.	n.a.	n.a.	n.a.	n.a.	n.a.	n.a.	n.a.	n.a.
Norway	23,4	26,0	19,3	19,4	11,9	22,4	23,3	20,8	19,3	14,2	-4,3	-10,4	7,8	-0,5	19,3
Poland	48,9	20,0	9,3	10,4	11,4	50,6	19,0	8,7	11,6	10,1	3,5	-5,0	-6,5	11,5	-11,4
Romania	33,0	33,0	20,0	12,0	2,0	32,0	32,0	21,0	11,0	4,0	-3,0	-3,0	5,0	-8,3	100,0
Spain	n.a.	n.a.	n.a.	n.a.	n.a.	n.a.	n.a.	n.a.	n.a.	n.a.	n.a.	n.a.	n.a.	n.a.	n.a.
Sweden	n.a.	n.a.	n.a.	n.a.	n.a.	n.a.	n.a.	n.a.	n.a.	n.a.	n.a.	n.a.	n.a.	n.a.	n.a.
Switzerland	n.a.	n.a.	n.a.	n.a.	n.a.	n.a.	n.a.	n.a.	n.a.	n.a.	n.a.	n.a.	n.a.	n.a.	n.a.
Turkey	n.a.	n.a.	n.a.	n.a.	n.a.	n.a.	n.a.	n.a.	n.a.	n.a.	n.a.	n.a.	n.a.	n.a.	n.a.
United Kingdom	n.a.	n.a.	n.a.	n.a.	n.a.	n.a.	n.a.	n.a.	n.a.	n.a.	n.a.	n.a.	n.a.	n.a.	n.a.

# Shipments in Millions m<sup>2</sup>

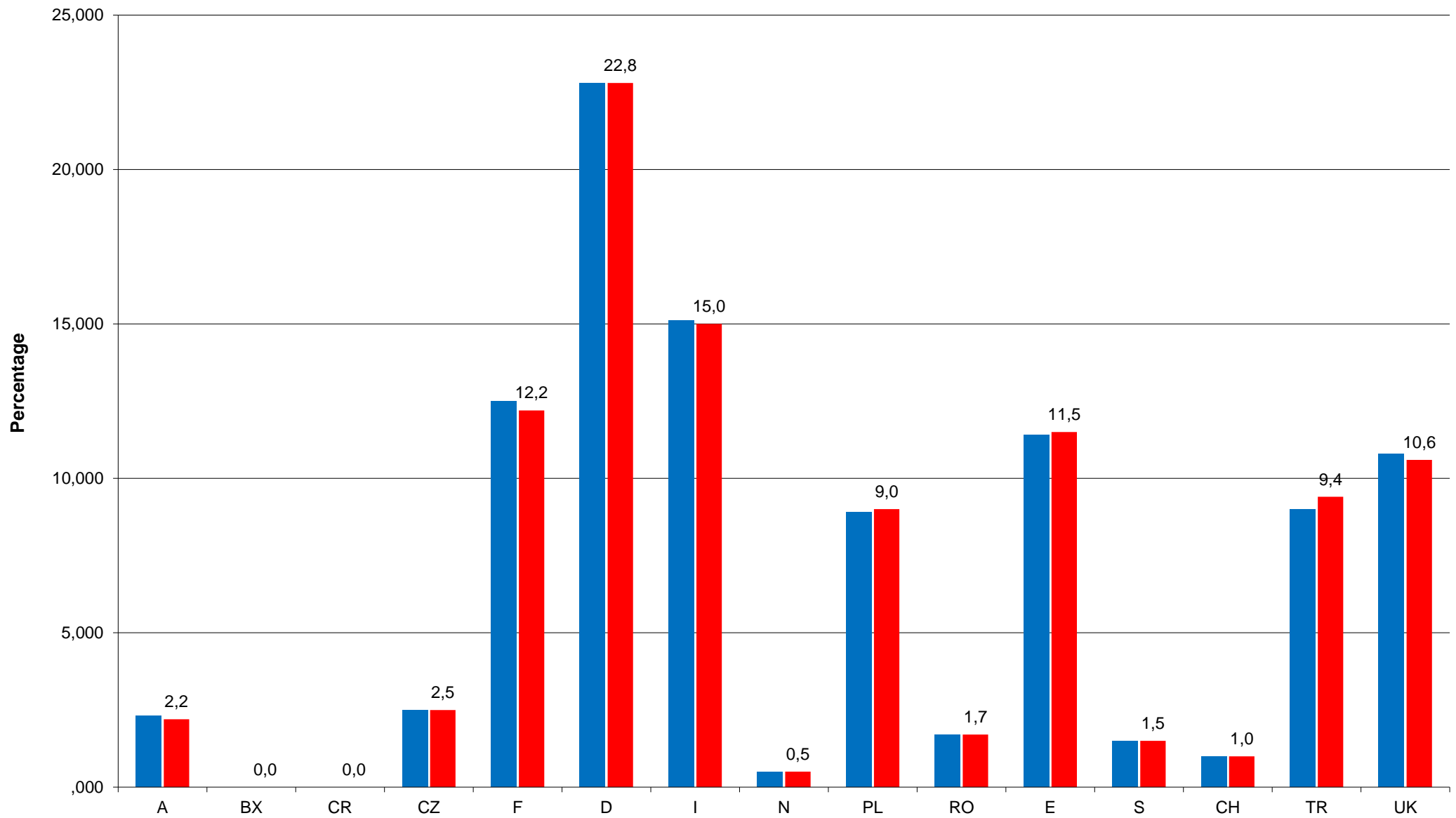
■ 2016 ■ 2017



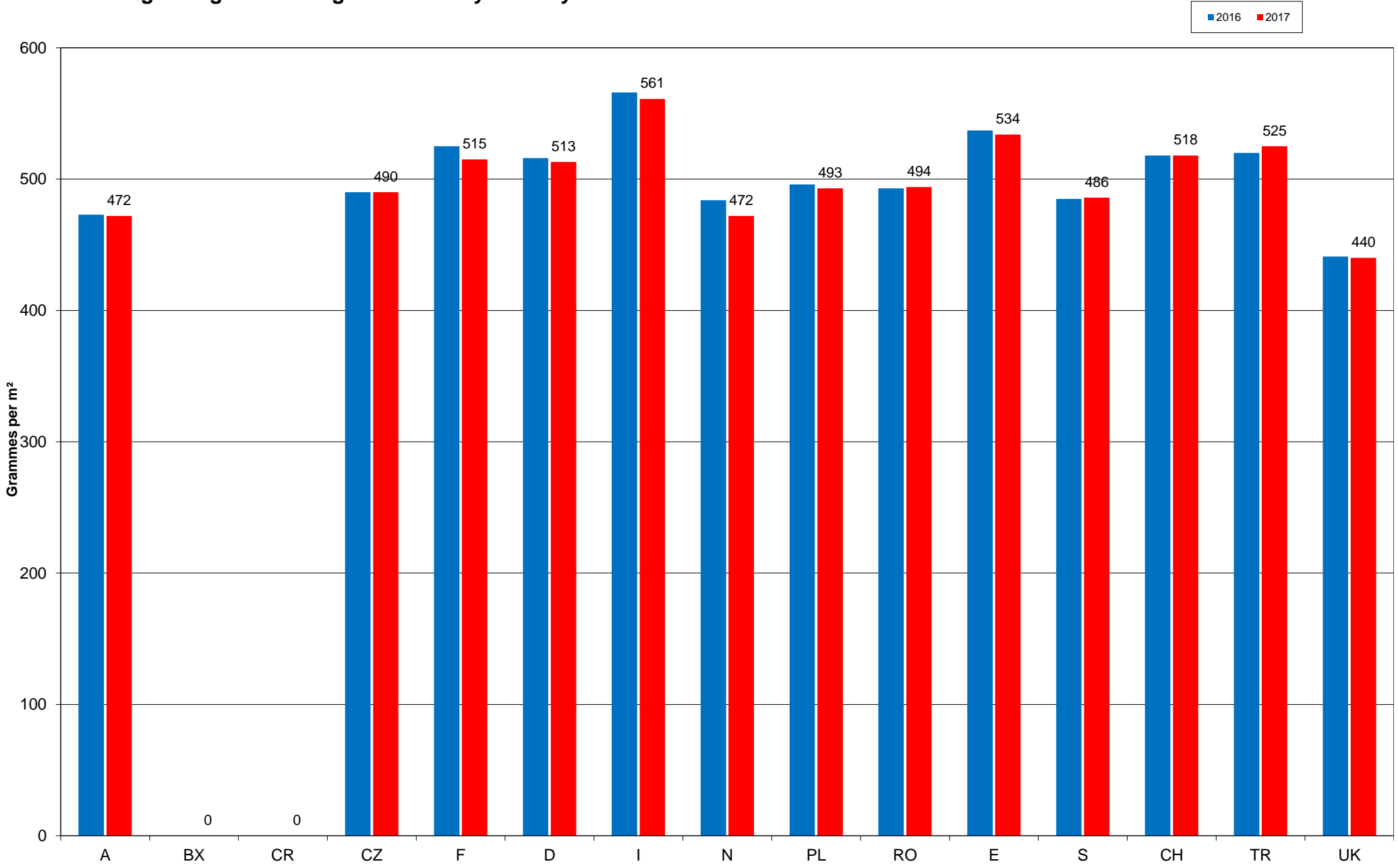
# Shipments in '000 Tonnes



# Relative Share of Total Shipments by Country (based on m<sup>2</sup>)



# Average Weight of Corrugated Board by Country



# Fluting Type

