

Annual Statistics
2012

FEFCO ANNUAL STATISTICS 2012

Tables:	Page
Key Statistics	2
Total Shipments (Millions of m ²) (including Non-Members)	3
Total Shipments ('000 Tonnes) (including Non-Members)	4
Shipments of Member Companies (Millions of m ²)	5
Shipments of Member Companies ('000 Tonnes)	6
Total Number of Companies (including Non-Members)	7
Total Number of Plants (including Non-Members)	8
Total Number of Corrugators (including Non-Members)	9
Average Weight of Board in g/m ² (including Non-Members)	10
Die Cut Boxes (as % of Total Shipments in m ²) (including Non-Members & Sheetplants)	11
Shipments in Sheets (as % of Total Shipments in m ²) (including Non-Members)	12
Total Consumption of Raw Materials ('000 Tonnes) (including Non-Members)	13
Consumption of Kraftliner as % of Total Consumption of Raw Materials	14
Consumption of Brown Kraftliner as % of Total Consumption of Raw Materials	15
Consumption of Testliner, as % of Total Consumption of Raw Materials	16
Consumption of White Top Testliner	17
Consumption of Other Recycled Liner as % of Total Consumption of Raw Materials	18
Consumption of Semi-Chemical Fluting, as % of Total Consumption of Raw Materials	19
Consumption of Recycled Fluting as % of Total Consumption of Raw Materials	20
Total number of Personnel	21
Production per Head ('000 m ²)	22
Nominal Working Time per Person (Hours per Year)	23
Classification by End Use	(seperate sheet) 24
Fluting Types in % of Total Shipments	(seperate sheet) 25
Printing Colours	(seperate sheet) 26
Diagramms	27-31

FEFCO ANNUAL REPORT 2012 Key Statistics

	2011	2012	% Change
Total Shipments (Millions of m ²) (including Non-Members)	42,159	42,185	0.10
Total Shipments ('000 Tonnes) (including Non-Members)	22,088	21,992	-0.40
Shipments of Member Companies (Millions of m ²)	35,584	35,684	0.30
Shipments of Member Companies ('000 Tonnes)	18,821	18,618	-1.10
Total Number of Companies (including Non-Members)	431	432	0.20
Total Number of Plants (including Non-Members)	707	716	1.30
Average Weight of Board in g/m ² (including Non-Members)	524	521	-0.60
Die Cut Boxes (as % of Total Shipments in m ²) (including Non-Members & Sheetplants)	41.9	43.0	0.90
Shipments in Sheets (as % of Total Shipments in m ²) (including Non-Members)	16.0	16.2	-0.50
Total Consumption of Raw Materials ('000 Tonnes) (including Non-Members)	19,082	18,995	-0.50
Consumption of Kraftliner as % of Total Consumption of Raw Materials	5.0	5.4	7.40
Consumption of Brown Kraftliner as % of Total Consumption of Raw Materials	13.0	14.2	8.50
Consumption of Testliner as % of Total Consumption of Raw Materials	29.0	29.3	1.00
Consumption of Other Recycled Liner as % of Total Consumption of Raw Materials	5.1	6.2	17.70
Consumption of Semi-chemical Fluting as % of Total Consumption of Raw Materials	4.9	5.3	7.50
Consumption of Recycled Fluting as % of Total Consumption of Raw Materials	32.7	36.3	9.90
Total Personnel	74,340	74,634	0.40

Total Shipments in Millions of m² (including Non-Members)

	2011	2012	% Change 2011/2012	Members Only
Austria	902	900	-0.22	Y / Y
Belgium	963	974	1.14	N / N
Croatia	215	240	11.63	N / N
Czech Republic	855	844	-1.29	N / N
Finland	280	272	-2.86	Y / Y
France	5,420	5,374	-0.85	N / N
Germany	9,276	9,092	-1.98	N / N
Hungary	465	509	9.46	N / N
Italy	6,361	6,150	-3.32	N / N
Netherlands	1,211	1,219	0.66	N / N
Norway	193	194	0.52	Y / Y
Poland	2,937	3,105	5.72	N / N
Portugal	663	n.a.	n.a.	n.a. / n.a.
Romania	498	509	2.21	Y / Y
Slovakia	128	122	-4.69	Y / Y
Spain	4,229	4,197	-0.76	N / N
Sweden	661	638	-3.48	Y / Y
Switzerland	471	446	-5.31	Y / Y
Turkey	3,224	3,358	4.16	N / N
United Kingdom	3,870	4,042	4.44	N / N
TOTAL EUROPE	42,822	42,185	0.10	

Total Shipments in 000's Tonnes (including Non-Members)

	2011	2012	% Change 2011/2012
Austria	432	428	-0.93
Belgium	503	510	1.39
Croatia	102	113	10.78
Czech Republic	430	422	-1.86
Finland	139	133	-4.32
France	2,867	2,838	-1.01
Germany	4,836	4,706	-2.69
Hungary	235	255	8.51
Italy	3,613	3,472	-3.90
Netherlands	673	683	1.49
Norway	92	93	1.09
Poland	1,483	1,568	5.73
Portugal	n.a.	n.a.	n.a.
Romania	243	247	1.65
Slovakia	68	65	-4.41
Spain	2,314	2,296	-0.78
Sweden	326	314	-3.68
Switzerland	247	232	-6.07
Turkey	1,702	1,772	4.11
United Kingdom	1,783	1,845	3.48
TOTAL EUROPE	22,088	21,992	-0.40

Shipments of Member Companies in Millions of m²

	2011	2012	% Change 2011/2012
Austria	902	900	-0.22
Belgium	762	780	2.36
Croatia	175	195	11.43
Czech Republic	551	540	-2.00
Finland	280	272	-2.86
France	4,457	4,429	-0.63
Germany	7,136	7,137	0.01
Hungary	440	471	7.05
Italy	5,668	5,507	-2.84
Netherlands	1,091	1,089	-0.18
Norway	193	194	0.52
Poland	2,509	2,624	4.58
Portugal	n.a.	n.a.	n.a.
Romania	498	509	2.21
Slovakia	128	122	-4.69
Spain	3,935	3,906	-0.74
Sweden	661	638	-3.48
Switzerland	471	446	-5.31
Turkey	2,354	2,443	3.78
United Kingdom	3,373	3,482	3.23
Membership Total	35,584	35,684	0.30

Shipments of Member Companies in 000's Tonnes

	Membership 2011		Membership 2012	
	Tonnes	% of Total Shipments	Tonnes	% of Total Shipments
Austria	432	100.00	428	100.00
Belgium	402	79.92	408	80.00
Croatia	83	81.37	92	81.42
Czech Republic	280	65.12	272	64.45
Finland	139	100.00	133	100.00
France	2,462	85.87	2,339	82.42
Germany	3,766	77.87	3,708	78.79
Hungary	222	94.47	236	92.55
Italy	3,258	90.17	3,147	90.64
Netherlands	606	90.04	603	88.29
Norway	92	100.00	93	100.00
Poland	1,256	84.69	1,312	83.67
Portugal	n.a.	n.a.	n.a.	n.a.
Romania	243	100.00	247	100.00
Slovakia	68	100.00	65	100.00
Spain	2,153	93.04	2,137	93.07
Sweden	326	100.00	314	100.00
Switzerland	247	100.00	232	100.00
Turkey	1,243	73.03	1,289	72.74
United Kingdom	1,543	86.54	1,563	84.72
Membership Total	18,821	85.20	18,618	84.70

Total Number of Companies (including Non-Members)

	2011	2012
Austria	7	7
Belgium	9	9
Croatia	6	6
Czech Republic	7	7
Finland	3	3
France	22	17
Germany	44	44
Hungary	6	7
Italy	57	55
Netherlands	9	9
Norway	3	3
Poland	34	34
Portugal	8	8
Romania	10	10
Slovakia	3	3
Spain	77	80
Sweden	4	4
Switzerland	6	6
Turkey	91	91
United Kingdom	25	29
TOTAL EUROPE	431	432

Total Number of Plants (including Non-Members)

	2011	2012
Austria	9	9
Belgium	12	12
Croatia	6	6
Czech Republic	9	9
Finland	5	5
France	63	63
Germany	125	124
Hungary	11	12
Italy	89	87
Netherlands	14	14
Norway	3	3
Poland	47	47
Portugal	11	11
Romania	11	10
Slovakia	3	3
Spain	96	99
Sweden	11	11
Switzerland	8	8
Turkey	115	116
United Kingdom	59	67
TOTAL EUROPE	707	716

Total Number of Corrugators (including Non-Members)

	2012			Result
	<2m	>2 <2,5m	> 2,5m	
Austria	1	8	n.a.	9
Belgium	1	14	3	18
Croatia	1	5	n.a.	6
Czech Republic	1	8	1	10
Finland	1	3	1	5
France	n.a.	n.a.	n.a.	n.a.
Germany	9	77	21	107
Hungary	2	8	1	11
Italy	8	79	11	98
Netherlands	n.a.	13	1	14
Norway	n.a.	3	n.a.	3
Poland	n.a.	n.a.	n.a.	n.a.
Portugal	n.a.	10	1	11
Romania	n.a.	10	n.a.	10
Slovakia	2	2	n.a.	4
Spain	16	85	5	106
Sweden	n.a.	12	1	13
Switzerland	3	6	n.a.	9
Turkey	63	49	10	122
United Kingdom	26	48	7	81
TOTAL EUROPE	134	440	63	637

**Average Weight of Board in g/m²
(including Non-Members)**

	2011	2012
Austria	479	476
Belgium	522	524
Croatia	474	471
Czech Republic	503	500
Finland	496	489
France	529	528
Germany	521	518
Hungary	505	501
Italy	568	565
Netherlands	556	560
Norway	477	479
Poland	505	505
Portugal	n.a.	n.a.
Romania	488	485
Slovakia	531	533
Spain	547	547
Sweden	493	492
Switzerland	524	520
Turkey	528	528
United Kingdom	461	456
TOTAL EUROPE as weighted average	524	521

Die Cut Boxes
(as % of Total Shipments in m²)
(including Non-Members & Sheetplants)

	2011	2012
Austria	55.4	52.6
Belgium	41.8	38.3
Croatia	46.6	43.7
Czech Republic	39.1	41.2
Finland	55.4	58.2
France	n.a.	n.a.
Germany	46.1	46.3
Hungary	30.1	33.4
Italy	n.a.	n.a.
Netherlands	40.8	38.1
Norway	56.5	57.6
Poland	43.0	44.5
Portugal	42.9	44.0
Romania	31.0	30.0
Slovakia	48.1	46.8
Spain	46.0	47.0
Sweden	n.a.	n.a.
Switzerland	55.5	57.8
Turkey	32.1	n.a.
United Kingdom	30.2	30.6
TOTAL EUROPE as weighted average	41.9	43.0

**Shipments in Sheets
(as % of Total Shipments in m²)
(including Non-Members)**

	2011	2012
Austria	11.1	9.5
Belgium	7.0	6.2
Croatia	22.5	26.7
Czech Republic	17.7	18.0
Finland	8.8	7.7
France	n.a.	n.a.
Germany	10.7	10.9
Hungary	34.4	25.9
Italy	n.a.	n.a.
Netherlands	8.1	7.6
Norway	5.3	5.2
Poland	24.4	23.6
Portugal	25.3	22.6
Romania	31.0	31.0
Slovakia	7.9	4.1
Spain	15.9	14.6
Sweden	7.3	6.5
Switzerland	5.8	4.8
Turkey	11.5	n.a.
United Kingdom	30.3	31.0
TOTAL EUROPE as weighted average	16.0	16.2

Total Consumption of Raw Materials in 000's Tonnes (including Non-Members)

	2011	2012	% Change 2011/2012
Austria	495	489	-1.21
Belgium	433	450	3.93
Croatia	90	99	10.00
Czech Republic	473	463	-2.11
Finland	154	149	-3.25
France	n.a.	n.a.	n.a.
Germany	5,101	4,976	-2.45
Hungary	254	265	4.33
Italy	3,721	3,576	-3.90
Netherlands	750	849	13.20
Norway	100	101	1.00
Poland	1,545	1,631	5.57
Portugal	331	347	4.83
Romania	257	270	5.06
Slovakia	80	76	-5.00
Spain	2,566	2,547	-0.74
Sweden	369	361	-2.17
Switzerland	230	217	-5.65
Turkey	1,968	n.a.	n.a.
United Kingdom	2,133	2,129	-0.19
TOTAL EUROPE	21,050	18,995	-0.50

**Consumption of Kraftliner
(as % of the Total Consumption of Raw Materials)
(including white and coloured kraft)**

	2011	2012
Austria	5.9	6.3
Belgium	5.7	5.3
Croatia	0.3	0.8
Czech Republic	3.5	3.6
Finland	13.0	13.2
France	n.a.	n.a.
Germany	5.7	5.5
Hungary	2.3	2.1
Italy	5.3	5.5
Netherlands	5.6	6.7
Norway	15.7	16.4
Poland	2.0	1.2
Portugal	4.1	2.7
Romania	0.8	0.7
Slovakia	1.4	1.6
Spain	5.1	5.1
Sweden	15.1	15.6
Switzerland	6.9	6.9
Turkey	0.8	1.8
United Kingdom	7.8	7.4
TOTAL EUROPE as weighted average	5.0	5.4

Consumption of Brown Kraftliner (as % of the Total Consumption of Raw Materials)

	2011	2012
Austria	13.6	14.6
Belgium	9.9	8.6
Croatia	4.2	4.3
Czech Republic	11.3	12.5
Finland	10.2	9.7
France	n.a.	n.a.
Germany	14.6	14.5
Hungary	16.1	16.0
Italy	19.2	19.1
Netherlands	15.4	15.4
Norway	17.5	12.6
Poland	7.0	7.5
Portugal	11.5	11.8
Romania	9.3	10.0
Slovakia	8.8	9.0
Spain	14.2	14.2
Sweden	15.1	15.6
Switzerland	16.9	16.8
Turkey	26.5	21.3
United Kingdom	13.1	12.5
TOTAL EUROPE as weighted average	13.0	14.2

Consumption of Testliner (as % of the Total Consumption of Raw Materials)

	2011	2012
Austria	28.5	27.0
Belgium	40.4	42.4
Croatia	39.4	38.7
Czech Republic	38.9	36.1
Finland	34.9	35.5
France	n.a.	n.a.
Germany	38.2	30.0
Hungary	37.1	34.5
Italy	19.1	19.2
Netherlands	37.2	33.9
Norway	26.2	46.0
Poland	40.0	37.4
Portugal	35.8	38.0
Romania	32.7	33.1
Slovakia	35.9	34.1
Spain	20.4	20.4
Sweden	17.0	16.4
Switzerland	35.9	35.8
Turkey	22.4	25.2
United Kingdom	43.9	40.8
TOTAL EUROPE as weighted average	29.0	29.3

Consumption of White Top Testliner (as % of the Total Consumption of Raw Materials)

	2011	2012
Austria	8.8	8.9
Belgium	n.a.	n.a.
Croatia	10.5	10.4
Czech Republic	n.a.	4.0
Finland	3.4	2.8
France	n.a.	n.a.
Germany	n.a.	8.3
Hungary	n.a.	n.a.
Italy	n.a.	n.a.
Netherlands	3.9	3.2
Norway	3.7	3.1
Poland	8.0	9.9
Portugal	n.a.	n.a.
Romania	4.6	4.8
Slovakia	6.6	6.9
Spain	5.1	5.1
Sweden	n.a.	n.a.
Switzerland	n.a.	n.a.
Turkey	n.a.	n.a.
United Kingdom	n.a.	n.a.
TOTAL EUROPE as weighted average	6.0	6.4

Consumption of schrenz and other liners (as % of the Total Consumption of Raw Materials)

	2011	2012
Austria	5.0	5.2
Belgium	n.a.	n.a.
Croatia	5.8	5.2
Czech Republic	2.5	2.2
Finland	0.6	0.7
France	n.a.	n.a.
Germany	2.3	2.5
Hungary	6.6	18.4
Italy	7.9	9.3
Netherlands	0.3	n.a.
Norway	1.0	n.a.
Poland	3.0	2.2
Portugal	5.5	4.1
Romania	12.5	11.8
Slovakia	0.1	0.3
Spain	10.2	10.2
Sweden	17.0	16.4
Switzerland	4.5	5.1
Turkey	2.2	4.5
United Kingdom	n.a.	n.a.
TOTAL EUROPE as weighted average	5.1	6.2

Consumption of Semi-Chemical Fluting (as % of the Total Consumption of Raw Materials)

	2011	2012
Austria	10.1	10.2
Belgium	1.2	1.1
Croatia	0.7	0.8
Czech Republic	4.4	1.8
Finland	21.9	22.2
France	n.a.	n.a.
Germany	1.3	1.5
Hungary	3.5	3.9
Italy	11.4	11.4
Netherlands	2.1	1.4
Norway	12.4	10.3
Poland	1.0	1.3
Portugal	16.1	16.7
Romania	4.7	5.2
Slovakia	n.a.	n.a.
Spain	8.7	8.7
Sweden	17.3	16.8
Switzerland	0.9	0.8
Turkey	3.7	7.0
United Kingdom	1.1	0.9
TOTAL EUROPE as weighted average	4.9	5.3

**Consumption of wellenstoff and other fluting
(as % of the Total Consumption of Raw Materials)**

	2011	2012
Austria	28.1	27.8
Belgium	42.8	42.6
Croatia	39.1	39.8
Czech Republic	39.4	39.8
Finland	16.0	15.9
France	n.a.	n.a.
Germany	37.9	37.7
Hungary	34.4	25.1
Italy	37.1	35.5
Netherlands	35.5	39.4
Norway	23.5	11.6
Poland	39.0	40.5
Portugal	27.0	26.7
Romania	35.4	34.4
Slovakia	47.2	48.1
Spain	36.3	36.3
Sweden	18.5	19.2
Switzerland	34.9	34.6
Turkey	44.4	40.2
United Kingdom	34.1	38.4
TOTAL EUROPE as weighted average	32.7	36.3

Total Number of Personnel

	2011		2012	
	Production Employees	Total Employees	Production Employees	Total Employees
Austria	1,252	1,692	1,240	1,705
Belgium	1,633	2,075	1,600	2,045
Croatia	473	620	478	608
Czech Republic	1,113	1,433	1,134	1,431
Finland	690	913	650	878
France	n.a.	n.a.	7,476	11,503
Germany	12,724	17,972	13,072	18,181
Hungary	1,018	1,429	1,107	1,479
Italy	5,770	12,950	5,712	12,820
Netherlands	1,421	2,161	1,425	2,205
Norway	320	515	409	618
Poland	4,006	5,771	3,782	5,520
Portugal	1,085	1,354	1,101	1,383
Romania	1,200	1,620	1,150	1,556
Slovakia	256	360	249	346
Spain	7,570	10,100	7,960	10,769
Sweden	1,268	1,776	1,212	1,733
Switzerland	918	1,332	913	1,337
Turkey	5,517	8,054	n.a.	n.a.
United Kingdom	6,776	10,267	6,613	10,020
TOTAL EUROPE	55,010	82,394	57,283	86,137

Production per Head in 1000 m²

	2011	2012
Austria	720	726
Belgium	590	609
Croatia	455	502
Czech Republic	768	744
Finland	406	418
France	n.a.	719
Germany	729	696
Hungary	457	460
Italy	1,102	1,077
Netherlands	852	855
Norway	603	474
Poland	733	821
Portugal	611	n.a.
Romania	415	443
Slovakia	500	490
Spain	559	527
Sweden	521	526
Switzerland	513	488
Turkey	584	n.a.
United Kingdom	571	611
TOTAL EUROPE	778	736

Nominal Working Time and Productivity per Head

	Working Time [hours / year]		Productivity [m ² /man hour]	
	2011	2012	2011	2012
Austria	1,706	1,687	422	430
Belgium	1,482	1,502	398	405
Croatia	2,008	2,000	226	251
Czech Republic	1,832	1,848	419	403
Finland	1,699	1,685	239	248
France	n.a.	n.a.	n.a.	n.a.
Germany	1,850	1,850	394	376
Hungary	1,905	1,856	240	248
Italy	1,760	1,760	626	612
Netherlands	n.a.	n.a.	n.a.	n.a.
Norway	1,725	1,725	350	275
Poland	2,016	2,016	364	407
Portugal	1,657	1,866	369	n.a.
Romania	1,790	1,850	232	239
Slovakia	1,815	1,650	275	297
Spain	1,768	1,768	316	298
Sweden	1,480	1,500	352	351
Switzerland	2,029	2,056	253	238
Turkey	2,040	2,040	286	n.a.
United Kingdom	1,710	1,710	334	357
TOTAL EUROPE	1,793	1,798	339	340

Classification of shipment by end-use sector, as a percentage of turnover 2012

	Austria	Belgium	Croatia	Czech Republic	Finland	France	Germany	Hungary	Italy	Netherlands	Norway	Poland	Portugal	Romania	Slovakia	Spain	Sweden	Turkey	United Kingdom	Weighted Average
1	28.2	48.9	37.0	25.0	27.1	n.a.	28.9	20.7	7.9	36.3	n.a.	32.2	20.9	26.0	26.2	16.5	28.4	29.1	n.a.	27.0
2	6.8	6.9	2.7	2.1	8.5	n.a.	3.3	5.1	42.0	12.8	n.a.	6.0	3.8	7.0	2.9	23.0	1.7	7.7	n.a.	9.3
3	9.3	4.8	6.6	5.2	7.7	n.a.	5.5	1.2	9.2	6.2	n.a.	7.7	13.6	4.0	3.6	15.0	4.5	4.3	n.a.	7.8
4	0.4	0.3	1.1	1.7	0.0	n.a.	0.7	0.7	1.1	2.1	n.a.	1.3	0.3	1.0	0.0	1.6	0.0	1.9	n.a.	1.0
Subtotal	44.7	60.9	47.4	34.0	43.3	n.a.	38.4	27.7	60.2	57.4	n.a.	47.2	38.6	38.0	32.7	56.1	34.6	43.0	n.a.	45.1
5	1.2	2.2	2.0	0.4	1.3	n.a.	1.2	0.7	1.3	1.3	n.a.	0.9	3.6	1.8	0.3	1.0	0.6	3.5	n.a.	1.2
6	2.3	2.3	1.8	2.4	2.1	n.a.	1.8	5.1	1.3	0.2	n.a.	4.4	5.1	6.5	1.2	1.0	5.7	2.1	n.a.	1.9
7	4.9	5.3	3.0	4.8	16.0	n.a.	4.4	2.9	12.8	7.8	n.a.	3.2	7.5	2.9	5.4	2.5	18.8	2.7	n.a.	5.2
8	3.5	7.1	1.4	2.3	2.9	n.a.	5.9	1.5	3.1	4.2	n.a.	2.7	2.0	1.6	10.6	2.0	6.0	1.8	n.a.	4.5
9	3.1	3.2	1.4	7.7	1.4	n.a.	4.4	6.3	3.9	0.5	n.a.	5.6	1.2	1.5	12.1	3.0	0.0	2.9	n.a.	3.4
10	3.8	0.2	1.7	3.0	1.7	n.a.	4.0	0.6	1.3	4.6	n.a.	0.8	1.9	1.2	0.0	1.0	0.0	1.3	n.a.	2.6
11	2.1	1.3	1.8	5.8	2.6	n.a.	1.2	1.1	5.6	1.1	n.a.	1.9	4.6	3.6	0.0	3.0	0.8	7.8	n.a.	1.8
12	7.6	0.9	0.7	1.7	3.6	n.a.	3.6	0.7	1.9	1.4	n.a.	0.8	1.3	0.2	0.7	0.5	3.9	2.6	n.a.	2.3
13	1.8	2.6	0.2	1.3	1.5	n.a.	1.6	5.0	0.4	0.4	n.a.	0.2	0.1	7.0	5.4	1.4	0.0	1.6	n.a.	1.6
14	2.1	0.0	1.8	5.2	3.2	n.a.	2.7	1.8	0.5	0.6	n.a.	2.2	0.7	2.0	2.5	1.9	2.0	0.9	n.a.	2.1
15	0.4	0.2	0.0	7.9	0.5	n.a.	0.6	10.0	2.7	0.2	n.a.	3.8	0.6	1.0	2.7	3.3	0.0	0.9	n.a.	1.5
16	0.4	0.2	1.1	0.6	0.4	n.a.	1.2	8.3	1.1	0.3	n.a.	1.3	1.0	1.3	2.1	1.5	0.0	6.4	n.a.	1.3
17	0.5	1.2	0.0	3.2	0.4	n.a.	3.1	0.4	0.6	1.9	n.a.	1.6	0.4	0.2	0.0	1.5	0.0	3.9	n.a.	2.1
18	0.3	0.3	0.0	0.0	0.2	n.a.	0.8	0.0	0.8	0.6	n.a.	0.0	0.0	0.1	0.0	0.9	0.0	0.0	n.a.	0.7
19	1.7	0.0	1.9	3.7	1.8	n.a.	0.0	7.5	1.1	1.4	n.a.	3.5	2.2	1.0	19.4	1.3	0.0	2.9	n.a.	0.8
20	0.6	1.2	0.0	2.4	0.2	n.a.	0.7	3.0	0.4	0.1	n.a.	0.2	0.8	2.4	0.8	2.0	0.0	0.1	n.a.	1.1
21	3.2	4.0	0.1	0.7	2.9	n.a.	3.5	0.0	0.5	2.1	n.a.	0.8	4.6	0.1	0.0	2.5	0.0	0.0	n.a.	2.7
22	11.2	2.3	27.3	4.9	5.5	n.a.	15.1	12.4	0.0	7.6	n.a.	12.5	21.7	26.1	4.1	9.9	19.4	12.1	n.a.	12.7
23	4.6	4.6	6.4	8.0	8.5	n.a.	5.8	5.0	0.5	6.3	n.a.	6.4	2.1	1.5	0.0	3.7	8.2	3.5	n.a.	5.3
Subtotal	55.3	39.1	52.6	66.0	56.7	n.a.	61.6	72.3	39.8	42.6	n.a.	52.8	61.4	62.0	67.3	43.9	65.4	57.0	n.a.	54.9
Total	100.0	100.0	100.0	100.0	100.0	n.a.	100.0	100.0	100.0	100.0	n.a.	100.0	100.0	100.0	100.0	100.0	100.0	100.0	n.a.	

Categories for classification:

- | | |
|--|---|
| <ul style="list-style-type: none"> 1 Foodstuffs 2 Agricultural Produce and Fresh Food 3 Beverages 4 Tobacco Products 5 Textiles, clothing, leather goods 6 Wooden goods and furniture 7 Paper goods and printed matter 8 Chemicals and related products 9 Detergents, soaps, perfumes, cosmetics, etc. 10 Rubber goods 11 Glassware, ceramicware and other non minerals 12 Metalware | <ul style="list-style-type: none"> 13 Machines and parts 14 Electrical equipment and accessories (except domestic appliance) 15 Audio, video and communication equipments 16 Electric appliances 17 Means of transport 18 Precision instruments, optical equipment and watches 19 Other industrial product 20 Sportswear and accessories, toys 21 Direct mail companies, dispatching houses 22 Corrugated Board converters (sheet plans) 23 All other not classified above |
|--|---|

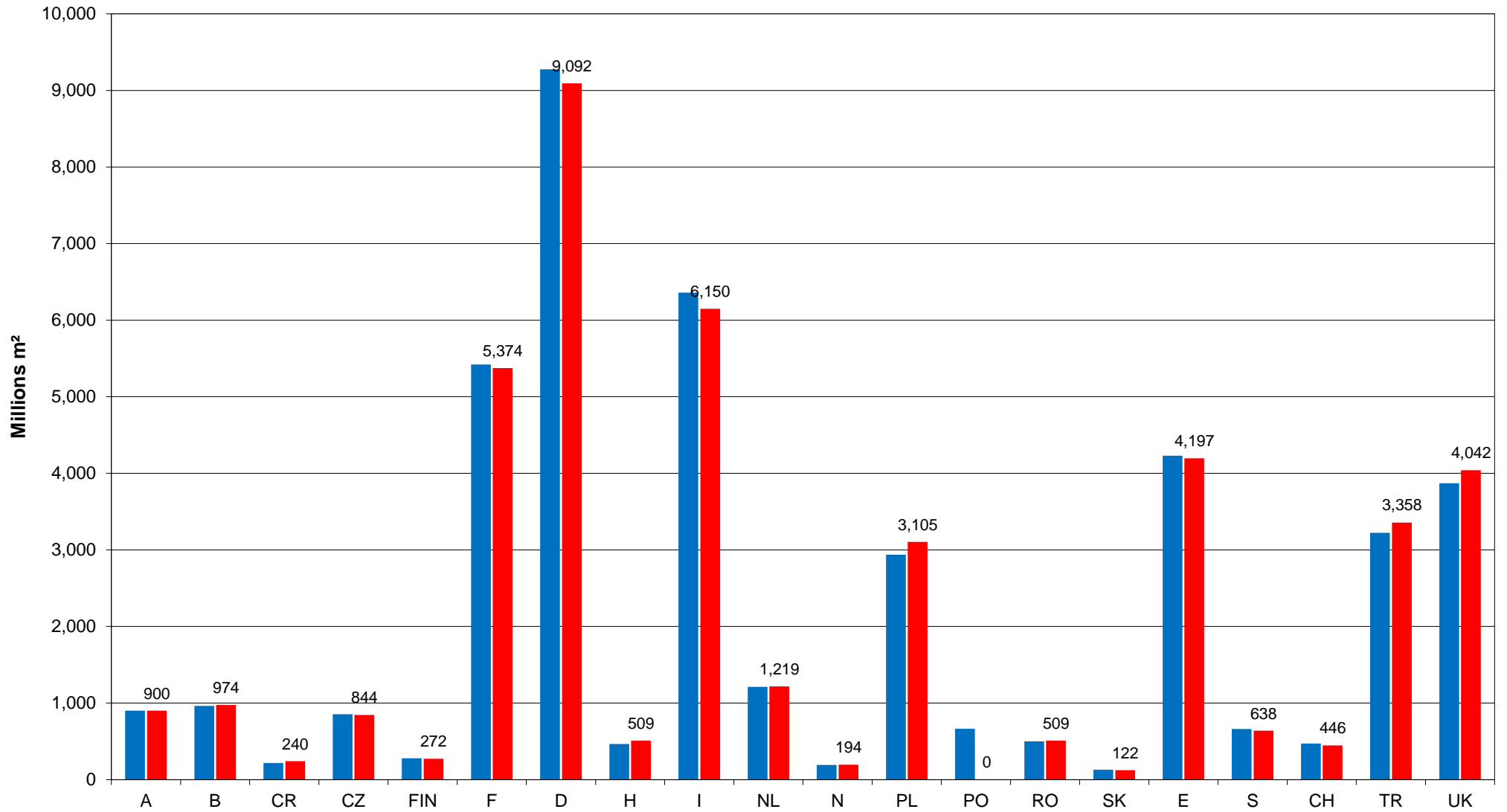
Fluting Types in % of Total Shipments 2012

	B-flute	C-flute	BC-flute	E-flute	Micro-FI	Others
Austria	41.6	17.6	11.1	18.2	0.9	10.6
Belgium	52.4	19.6	11.1	6.2	1.2	9.5
Croatia	46.2	18.9	16.6	15.9	0.0	2.4
Czech Republic	40.1	10.9	22.4	17.6	0.0	9.0
Finland	n.a.	n.a.	n.a.	n.a.	n.a.	n.a.
France	n.a.	n.a.	n.a.	n.a.	n.a.	n.a.
Germany	39.0	14.4	17.1	13.8	1.2	14.5
Hungary	45.2	23.1	12.7	13.7	0.9	4.4
Italy	n.a.	n.a.	n.a.	n.a.	n.a.	n.a.
Netherlands	n.a.	n.a.	n.a.	n.a.	n.a.	n.a.
Norway	45.4	33.1	4.9	15.3	0.7	0.6
Poland	50.7	17.4	10.0	11.7	0.3	9.9
Portugal	46.6	18.7	15.1	7.8	3.9	7.9
Romania	35.0	29.0	15.0	17.0	0.0	4.0
Slovakia	44.8	15.4	17.1	15.9	0.0	6.8
Spain	n.a.	n.a.	n.a.	n.a.	n.a.	n.a.
Sweden	n.a.	n.a.	n.a.	n.a.	n.a.	n.a.
Turkey	n.a.	n.a.	n.a.	n.a.	n.a.	n.a.
United Kingdom	n.a.	n.a.	n.a.	n.a.	n.a.	n.a.
Total Europe as weighted average	34.1	13.1	12.0	10.9	0.7	9.5

Countries	% of the Products by Number of Printing Colours										% Changes				
	2011					2012					2011 / 2012				
	0	1	2	3	> 3	0	1	2	3	> 3	0	1	2	3	> 3
Austria	36.4	36.4	10.7	7.8	8.7	38.6	35.4	10.5	6.9	8.6	6.0	-2.7	-1.9	-11.5	-1.1
Belgium	22.0	46.9	14.4	10.8	5.9	28.0	36.6	20.7	5.7	9.0	27.3	-22.0	43.8	-47.2	52.5
Croatia	46.1	32.0	11.8	6.8	3.3	49.0	31.1	11.7	5.1	3.1	6.3	-2.8	-0.8	-25.0	-6.1
Czech Republic	28.3	41.2	19.6	7.2	3.7	28.9	43.4	17.9	5.6	4.2	2.1	5.3	-8.7	-22.2	13.5
Finland	n.a.	n.a.	n.a.	n.a.	n.a.	n.a.	n.a.	n.a.	n.a.	n.a.	n.a.	n.a.	n.a.	n.a.	n.a.
France	n.a.	n.a.	n.a.	n.a.	n.a.	n.a.	n.a.	n.a.	n.a.	n.a.	n.a.	n.a.	n.a.	n.a.	n.a.
Germany	30.7	34.5	14.5	9.6	10.7	30.2	33.5	14.7	10.0	11.6	-1.6	-2.9	1.4	4.2	8.4
Hungary	47.8	26.4	13.4	4.5	7.9	46.5	25.5	16.1	4.5	7.4	-2.7	-3.4	20.1	0.0	-6.3
Italy	n.a.	n.a.	n.a.	n.a.	n.a.	n.a.	n.a.	n.a.	n.a.	n.a.	n.a.	n.a.	n.a.	n.a.	n.a.
Netherlands	n.a.	n.a.	n.a.	n.a.	n.a.	n.a.	n.a.	n.a.	n.a.	n.a.	n.a.	n.a.	n.a.	n.a.	n.a.
Norway	24.7	33.7	18.1	14.7	8.8	24.4	26.0	18.6	15.9	15.1	-1.2	-22.8	2.8	8.2	71.6
Poland	36.7	26.7	13.7	9.8	13.1	39.5	23.9	17.7	7.9	11.0	7.6	-10.5	29.2	-19.4	-16.0
Portugal	n.a.	n.a.	n.a.	n.a.	n.a.	n.a.	n.a.	n.a.	n.a.	n.a.	n.a.	n.a.	n.a.	n.a.	n.a.
Romania	27.0	35.0	22.0	10.0	6.0	26.0	36.0	20.0	10.0	8.0	-3.7	2.9	-9.1	0.0	33.3
Slovakia	6.9	27.2	38.4	21.3	6.2	17.7	54.5	12.9	9.6	5.3	156.5	100.4	-66.4	-54.9	-14.5
Spain	n.a.	n.a.	n.a.	n.a.	n.a.	n.a.	n.a.	n.a.	n.a.	n.a.	n.a.	n.a.	n.a.	n.a.	n.a.
Sweden	n.a.	n.a.	n.a.	n.a.	n.a.	n.a.	n.a.	n.a.	n.a.	n.a.	n.a.	n.a.	n.a.	n.a.	n.a.
Turkey	n.a.	n.a.	n.a.	n.a.	n.a.	n.a.	n.a.	n.a.	n.a.	n.a.	n.a.	n.a.	n.a.	n.a.	n.a.
United Kingdom	n.a.	n.a.	n.a.	n.a.	n.a.	n.a.	n.a.	n.a.	n.a.	n.a.	n.a.	n.a.	n.a.	n.a.	n.a.

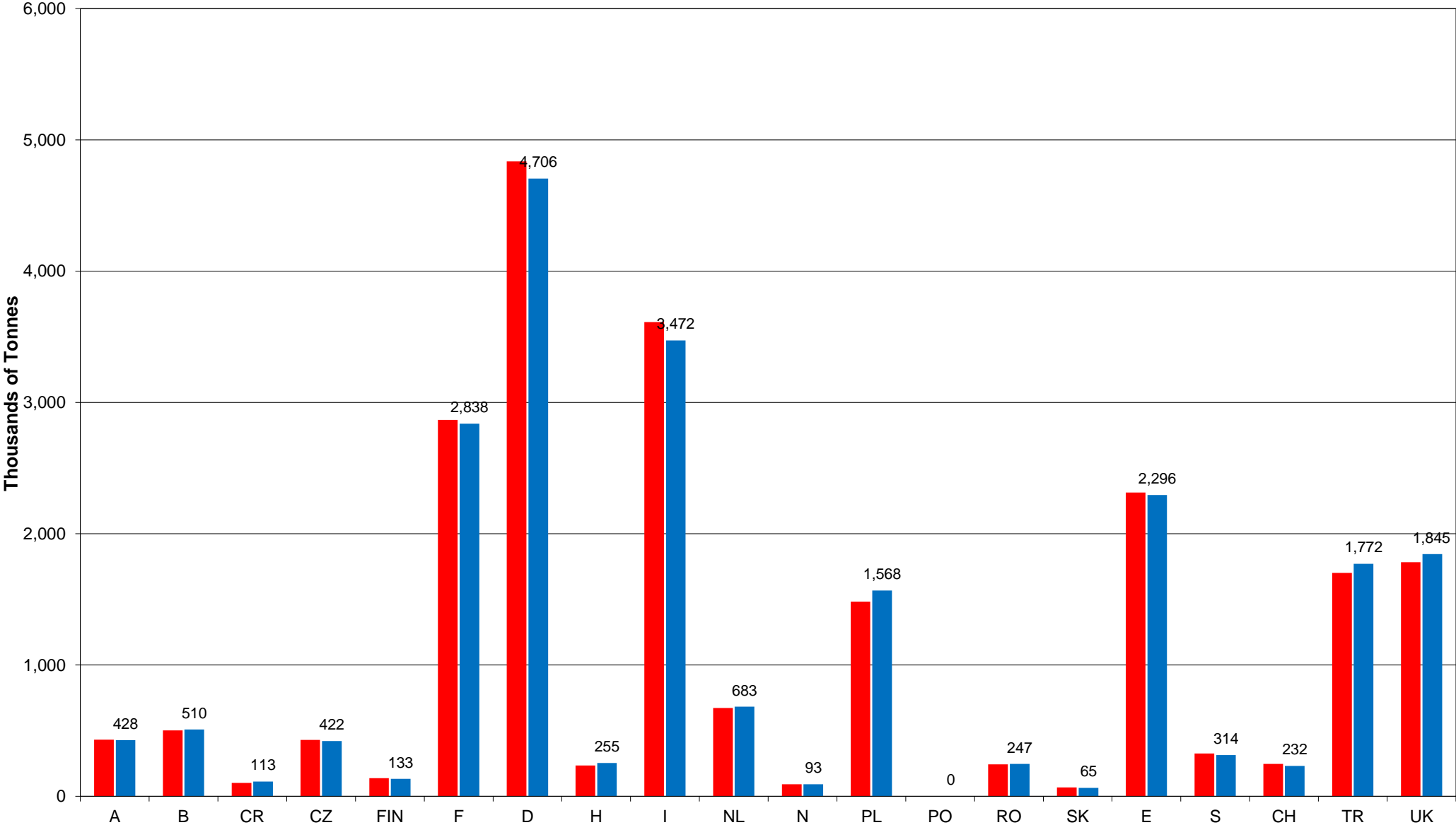
Shipments in Millions m²

■ 2011 ■ 2012



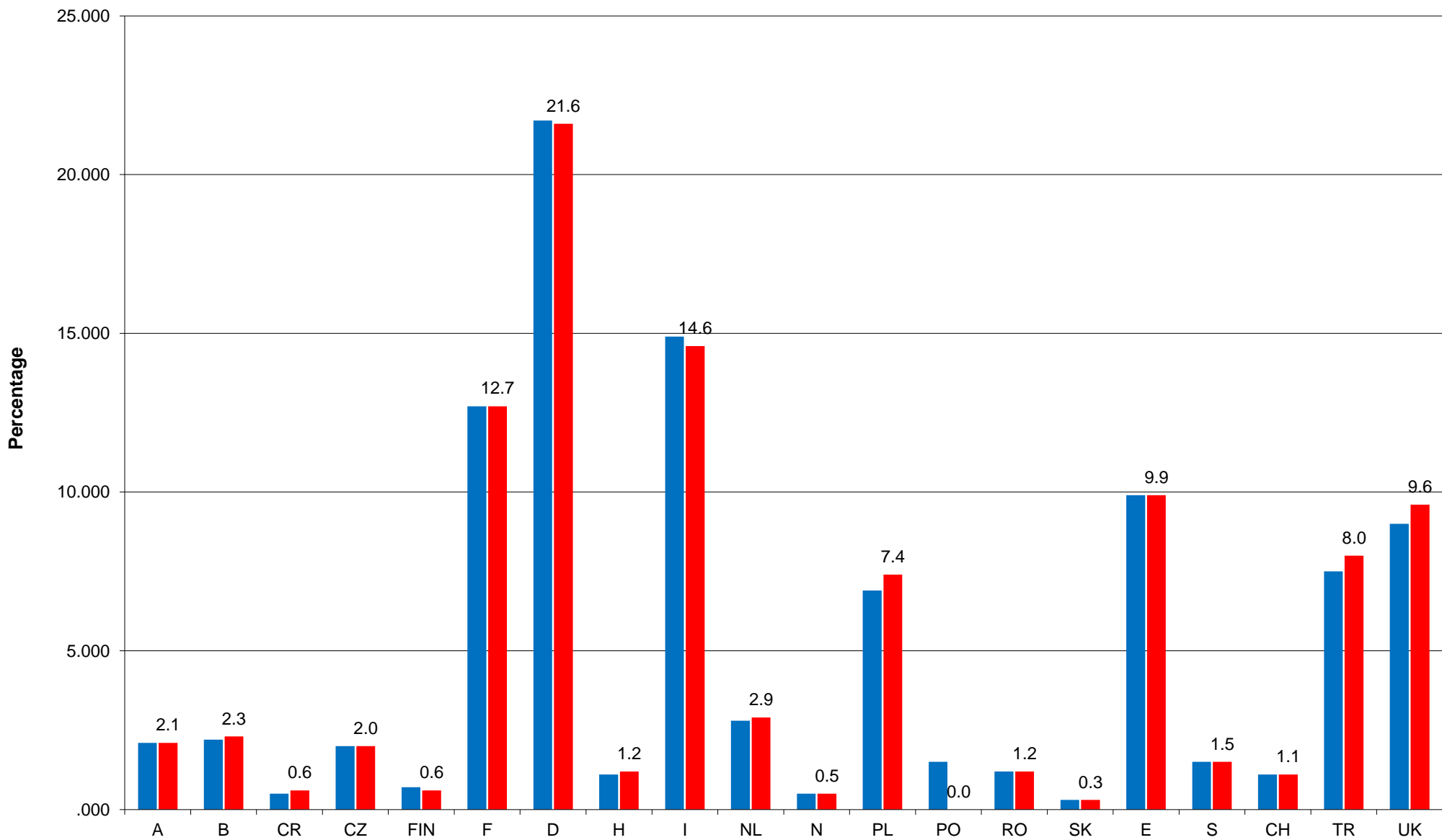
Shipments in '000 Tonnes

2011 2012

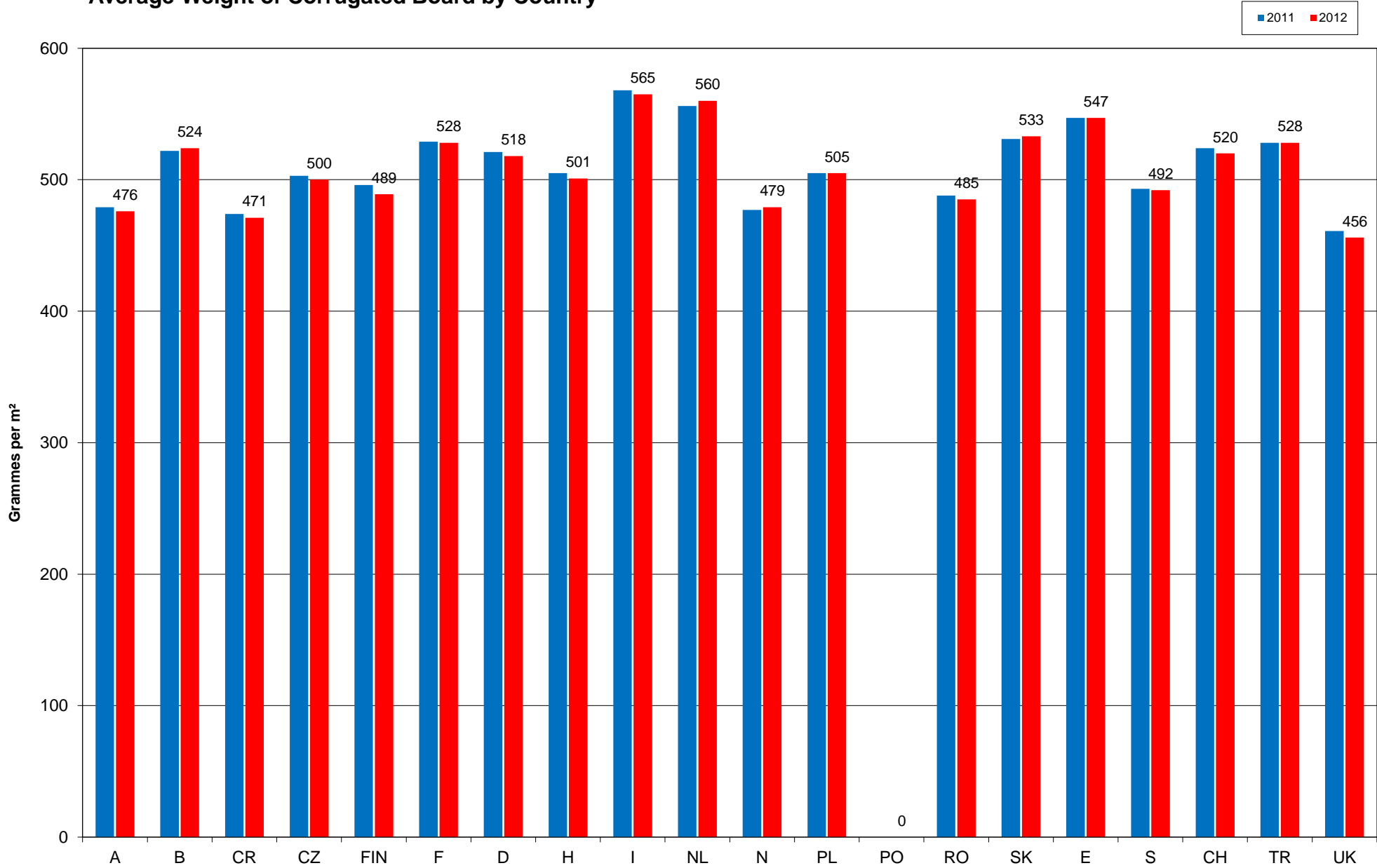


Relative Share of Total Shipments by Country (based on m²)

2011 2012



Average Weight of Corrugated Board by Country



Fluting Type

