

Annual Statistics
2011



European Federation of Corrugated Board Manufacturers

ANNUAL STATISTICS 2011

FEFCO ANNUAL STATISTICS 2011

Tables:	Page
Key Statistics	2
Total Shipments (Millions of m ²) (including Non-Members)	3
Total Shipments ('000 Tonnes) (including Non-Members)	4
Shipments of Member Companies (Millions of m ²)	5
Shipments of Member Companies ('000 Tonnes)	6
Total Number of Companies (including Non-Members)	7
Total Number of Plants (including Non-Members)	8
Total Number of Corrugators (including Non-Members)	9
Average Weight of Board in g/m ² (including Non-Members)	10
Die Cut Boxes (as % of Total Shipments in m ²) (including Non-Members & Sheetplants)	11
Shipments in Sheets (as % of Total Shipments in m ²) (including Non-Members)	12
Total Consumption of Raw Materials ('000 Tonnes) (including Non-Members)	13
Consumption of Kraftliner as % of Total Consumption of Raw Materials	14
Consumption of Brown Kraftliner as % of Total Consumption of Raw Materials	15
Consumption of Testliner, as % of Total Consumption of Raw Materials	16
Consumption of White Top Testliner	17
Consumption of Other Recycled Liner as % of Total Consumption of Raw Materials	18
Consumption of Semi-Chemical Fluting, as % of Total Consumption of Raw Materials	19
Consumption of Recycled Fluting as % of Total Consumption of Raw Materials	20
Total number of Personnel	21
Production per Head ('000 m ²)	22
Nominal Working Time per Person (Hours per Year)	23
Classification by End Use	(seperate sheet) 24
Fluting Types in % of Total Shipments	(seperate sheet) 25
Printing Colours	(seperate sheet) 26
Diagramms	27-31

FEFCO ANNUAL REPORT 2011 Key Statistics

	2010	2011	% Change
Total Shipments (Millions of m ²) (including Non-Members)	42,314	42,907	1.40
Total Shipments ('000 Tonnes) (including Non-Members)	21,922	22,149	1.00
Shipments of Member Companies (Millions of m ²)	35,304	35,787	1.40
Shipments of Member Companies ('000 Tonnes)	18,633	18,814	1.00
Total Number of Companies (including Non-Members)	427	426	-0.20
Total Number of Plants (including Non-Members)	698	695	-0.40
Average Weight of Board in g/m ² (including Non-Members)	526	524	-0.40
Die Cut Boxes (as % of Total Shipments in m ²) (including Non-Members & Sheetplants)	42.5	41.7	-0.20
Shipments in Sheets (as % of Total Shipments in m ²) (including Non-Members)	16.0	16.1	1.80
Total Consumption of Raw Materials ('000 Tonnes) (including Non-Members)	20,644	21,050	2.00
Consumption of Kraftliner as % of Total Consumption of Raw Materials	5.4	5.3	-1.90
Consumption of Brown Kraftliner as % of Total Consumption of Raw Materials	14.9	15.2	2.00
Consumption of Testliner as % of Total Consumption of Raw Materials	30.8	29.5	-4.40
Consumption of Other Recycled Liner as % of Total Consumption of Raw Materials	6.9	6.7	-3.00
Consumption of Semi-chemical Fluting as % of Total Consumption of Raw Materials	7.5	7.5	0
Consumption of Recycled Fluting as % of Total Consumption of Raw Materials	34.1	34.3	0.60
Total Personnel	83,593	82,843	-0.90

Total Shipments in Millions of m² (including Non-Members)

	2010	2011	% Change 2010/2011	Members Only
Austria	894	902	0.89	Y / Y
Belgium	947	963	1.69	N / N
Croatia	243	215	-11.52	N / N
Czech Republic	828	855	3.26	N / N
Finland	278	280	0.72	Y / Y
France	5,405	5,530	2.31	N / N
Germany	9,120	9,239	1.30	N / N
Hungary	479	477	-0.42	N / N
Italy	6,419	6,361	-0.90	N / N
Netherlands	1,193	1,211	1.51	N / N
Norway	198	193	-2.53	Y / Y
Poland	2,808	2,937	4.59	N / N
Portugal	663	663	0	n.a. / n.a.
Romania	473	498	5.29	N / Y
Slovakia	123	128	4.07	Y / Y
Spain	4,207	4,229	0.52	N / N
Sweden	656	661	0.76	Y / Y
Switzerland	474	471	-0.63	Y / Y
Turkey	2,954	3,224	9.14	N / N
United Kingdom	3,952	3,870	-2.07	N / N
TOTAL EUROPE	42,314	42,907	1.40	

Total Shipments in 000's Tonnes (including Non-Members)

	2010	2011	% Change 2010/2011
Austria	438	432	-1.37
Belgium	500	503	0.60
Croatia	119	102	-14.29
Czech Republic	411	430	4.62
Finland	137	139	1.46
France	2,877	2,930	1.84
Germany	4,776	4,841	1.36
Hungary	238	228	-4.20
Italy	3,677	3,613	-1.74
Netherlands	661	673	1.82
Norway	97	92	-5.15
Poland	1,441	1,483	2.91
Portugal	n.a.	n.a.	n.a.
Romania	226	243	7.52
Slovakia	63	68	7.94
Spain	2,302	2,314	0.52
Sweden	324	326	0.62
Switzerland	252	247	-1.98
Turkey	1,564	1,702	8.82
United Kingdom	1,819	1,783	-1.98
TOTAL EUROPE	21,922	22,149	1.00

Shipments of Member Companies in Millions of m²

	2010	2011	% Change 2010/2011
Austria	894	902	0.89
Belgium	757	762	0.66
Croatia	198	175	-11.62
Czech Republic	524	551	5.15
Finland	278	280	0.72
France	4,528	4,647	2.63
Germany	7,066	7,136	0.99
Hungary	458	453	-1.09
Italy	5,721	5,668	-0.93
Netherlands	1,085	1,091	0.55
Norway	198	193	-2.53
Poland	2,398	2,509	4.63
Portugal	n.a.	n.a.	n.a.
Romania	433	498	15.01
Slovakia	123	128	4.07
Spain	3,915	3,935	0.51
Sweden	656	661	0.76
Switzerland	474	471	-0.63
Turkey	2,151	2,354	9.44
United Kingdom	3,447	3,373	-2.15
Membership Total	35,304	35,787	1.40

Shipments of Member Companies in 000's Tonnes

	Membership 2010		Membership 2011	
	Tonnes	% of Total Shipments	Tonnes	% of Total Shipments
Austria	438	100.00	432	100.00
Belgium	400	80.00	402	79.92
Croatia	97	81.51	83	81.37
Czech Republic	261	63.50	280	65.12
Finland	137	100.00	139	100.00
France	2,410	83.77	2,462	84.03
Germany	3,728	78.06	3,766	77.79
Hungary	227	95.38	215	94.30
Italy	3,308	89.96	3,258	90.17
Netherlands	601	90.92	606	90.04
Norway	97	100.00	92	100.00
Poland	1,220	84.66	1,256	84.69
Portugal	n.a.	n.a.	n.a.	n.a.
Romania	205	90.71	243	100.00
Slovakia	63	100.00	68	100.00
Spain	2,142	93.05	2,153	93.04
Sweden	324	100.00	326	100.00
Switzerland	252	100.00	247	100.00
Turkey	1,140	72.89	1,243	73.03
United Kingdom	1,583	87.03	1,543	86.54
Membership Total	18,633	85.00	18,814	84.90

Total Number of Companies (including Non-Members)

	2010	2011
Austria	8	7
Belgium	9	9
Croatia	6	6
Czech Republic	7	7
Finland	3	3
France	22	22
Germany	39	39
Hungary	6	6
Italy	59	57
Netherlands	9	9
Norway	3	3
Poland	34	34
Portugal	8	8
Romania	10	10
Slovakia	3	3
Spain	77	77
Sweden	4	4
Switzerland	6	6
Turkey	91	91
United Kingdom	23	25
TOTAL EUROPE	427	426

Total Number of Plants (including Non-Members)

	2010	2011
Austria	11	9
Belgium	12	12
Croatia	6	6
Czech Republic	9	9
Finland	5	5
France	63	63
Germany	115	114
Hungary	10	10
Italy	88	89
Netherlands	14	14
Norway	3	3
Poland	47	47
Portugal	11	11
Romania	11	11
Slovakia	3	3
Spain	97	96
Sweden	11	11
Switzerland	8	8
Turkey	114	115
United Kingdom	60	59
TOTAL EUROPE	698	695

Total Number of Corrugators (including Non-Members)

	2011			Result
	<2m	>2 <2,5m	> 2,5m	
Austria	1	8	n.a.	9
Belgium	1	14	3	18
Croatia	1	5	n.a.	6
Czech Republic	1	8	1	10
Finland	1	3	1	5
France	n.a.	n.a.	n.a.	n.a.
Germany	13	79	18	110
Hungary	2	8	n.a.	10
Italy	8	81	13	102
Netherlands	n.a.	13	1	14
Norway	n.a.	3	n.a.	3
Poland	n.a.	n.a.	n.a.	n.a.
Portugal	n.a.	10	1	11
Romania	1	10	n.a.	11
Slovakia	2	2	n.a.	4
Spain	14	86	3	103
Sweden	n.a.	11	1	12
Switzerland	3	6	n.a.	9
Turkey	63	48	10	121
United Kingdom	13	37	18	68
TOTAL EUROPE	124	432	70	626

**Average Weight of Board in g/m²
(including Non-Members)**

	2010	2011
Austria	490	479
Belgium	528	522
Croatia	490	474
Czech Republic	496	503
Finland	493	496
France	532	530
Germany	524	524
Hungary	497	478
Italy	573	568
Netherlands	554	556
Norway	490	477
Poland	513	505
Portugal	n.a.	
Romania	478	488
Slovakia	512	531
Spain	547	547
Sweden	494	493
Switzerland	532	524
Turkey	529	528
United Kingdom	460	461
TOTAL EUROPE as weighted average	526	524

Die Cut Boxes
(as % of Total Shipments in m²)
(including Non-Members & Sheetplants)

	2010	2011
Austria	56.9	55.4
Belgium	44.9	41.8
Croatia	45.7	46.6
Czech Republic	40.9	39.1
Finland	61.1	55.4
France	n.a.	n.a.
Germany	46.6	46.1
Hungary	30.5	30.1
Italy	n.a.	n.a.
Netherlands	40.6	40.8
Norway	53.6	56.5
Poland	44.7	43.0
Portugal	42.9	42.9
Romania	30.5	31.0
Slovakia	49.2	48.1
Spain	46.0	46.0
Sweden	n.a.	n.a.
Switzerland	54.0	55.5
Turkey	34.4	32.1
United Kingdom	30.4	30.2
TOTAL EUROPE as weighted average	42.5	41.7

**Shipments in Sheets
(as % of Total Shipments in m²)
(including Non-Members)**

	2010	2011
Austria	11.2	11.1
Belgium	6.2	7.0
Croatia	26.0	22.5
Czech Republic	17.8	17.7
Finland	8.2	8.8
France	n.a.	n.a.
Germany	10.8	10.7
Hungary	32.0	34.4
Italy	n.a.	n.a.
Netherlands	8.4	8.1
Norway	5.9	5.3
Poland	25.1	24.4
Portugal	25.3	25.3
Romania	30.5	31.0
Slovakia	8.7	7.9
Spain	16.2	15.9
Sweden	7.4	7.3
Switzerland	6.9	5.8
Turkey	9.1	11.5
United Kingdom	30.1	30.0
TOTAL EUROPE as weighted average	16.0	16.1

Total Consumption of Raw Materials in 000's Tonnes (including Non-Members)

	2010	2011	% Change 2010/2011
Austria	502	495	-1.39
Belgium	425	433	1.88
Croatia	105	90	-14.29
Czech Republic	448	473	5.58
Finland	141	154	9.22
France	n.a.	n.a.	n.a.
Germany	5,025	5,101	1.51
Hungary	265	254	-4.15
Italy	3,787	3,721	-1.74
Netherlands	724	750	3.59
Norway	105	100	-4.76
Poland	1,501	1,545	2.93
Portugal	331	331	0
Romania	224	257	14.73
Slovakia	74	80	8.11
Spain	2,554	2,566	0.47
Sweden	373	369	-1.07
Switzerland	230	230	0
Turkey	1,682	1,968	17.00
United Kingdom	2,148	2,133	-0.70
TOTAL EUROPE	20,644	21,050	2.00

**Consumption of Kraftliner
(as % of the Total Consumption of Raw Materials)
(including white and coloured kraft)**

	2010	2011
Austria	6.7	5.9
Belgium	6.0	5.7
Croatia	0.7	0.3
Czech Republic	3.9	3.5
Finland	12.8	13.0
France	n.a.	n.a.
Germany	5.9	5.7
Hungary	2.3	2.3
Italy	5.0	5.3
Netherlands	6.4	5.6
Norway	13.6	15.7
Poland	1.1	2.0
Portugal	4.1	4.1
Romania	1.2	0.8
Slovakia	0.9	1.4
Spain	7.6	6.9
Sweden	12.9	15.1
Switzerland	6.5	6.9
Turkey	0.4	0.8
United Kingdom	7.7	7.8
TOTAL EUROPE as weighted average	5.4	5.3

Consumption of Brown Kraftliner (as % of the Total Consumption of Raw Materials)

	2010	2011
Austria	13.7	13.6
Belgium	9.5	9.9
Croatia	4.7	4.2
Czech Republic	10.3	11.3
Finland	12.4	10.2
France	n.a.	n.a.
Germany	14.7	14.6
Hungary	16.3	16.1
Italy	20.6	19.2
Netherlands	16.7	15.4
Norway	12.9	17.5
Poland	6.7	7.0
Portugal	11.5	11.5
Romania	8.5	9.3
Slovakia	8.1	8.8
Spain	13.2	11.9
Sweden	12.9	15.1
Switzerland	15.9	16.9
Turkey	20.2	26.5
United Kingdom	12.9	13.1
TOTAL EUROPE as weighted average	14.9	15.2

Consumption of Testliner (as % of the Total Consumption of Raw Materials)

	2010	2011
Austria	35.4	28.5
Belgium	40.2	40.4
Croatia	46.6	39.4
Czech Republic	41.3	38.9
Finland	35.1	34.9
France	n.a.	n.a.
Germany	38.5	38.2
Hungary	36.1	37.1
Italy	18.3	19.1
Netherlands	35.8	37.2
Norway	33.5	26.2
Poland	48.3	40.0
Portugal	35.8	35.8
Romania	37.5	32.7
Slovakia	38.6	35.9
Spain	6.0	7.1
Sweden	19.0	17.0
Switzerland	35.6	35.9
Turkey	31.6	22.4
United Kingdom	42.5	43.9
TOTAL EUROPE as weighted average	30.8	29.5

Consumption of White Top Testliner (as % of the Total Consumption of Raw Materials)

	2010	2011
Austria	n.a.	8.8
Belgium	n.a.	n.a.
Croatia	n.a.	10.5
Czech Republic	n.a.	n.a.
Finland	n.a.	3.4
France	n.a.	n.a.
Germany	n.a.	n.a.
Hungary	n.a.	n.a.
Italy	n.a.	n.a.
Netherlands	3.3	3.9
Norway	n.a.	3.7
Poland	n.a.	8.0
Portugal	n.a.	n.a.
Romania	n.a.	4.6
Slovakia	6.2	6.6
Spain	10.0	10.0
Sweden	n.a.	n.a.
Switzerland	n.a.	n.a.
Turkey	n.a.	n.a.
United Kingdom	n.a.	n.a.
TOTAL EUROPE as weighted average	8.5	8.6

Consumption of schrenz and other liners (as % of the Total Consumption of Raw Materials)

	2010	2011
Austria	5.9	5.0
Belgium	0.1	n.a.
Croatia	9.1	5.8
Czech Republic	3.0	2.5
Finland	1.8	0.6
France	n.a.	n.a.
Germany	2.5	2.3
Hungary	7.4	6.6
Italy	6.7	7.9
Netherlands	0.5	0.3
Norway	4.0	1.0
Poland	3.7	3.0
Portugal	5.5	5.5
Romania	13.6	12.5
Slovakia	0.1	0.1
Spain	23.1	21.4
Sweden	19.0	17.0
Switzerland	5.3	4.5
Turkey	0.1	2.2
United Kingdom	n.a.	n.a.
TOTAL EUROPE as weighted average	6.9	6.7

Consumption of Semi-Chemical Fluting (as % of the Total Consumption of Raw Materials)

	2010	2011
Austria	10.2	10.1
Belgium	1.0	1.2
Croatia	4.3	0.7
Czech Republic	4.9	4.4
Finland	24.5	21.9
France	n.a.	n.a.
Germany	1.4	1.3
Hungary	3.0	3.5
Italy	12.5	11.4
Netherlands	1.1	2.1
Norway	12.8	12.4
Poland	1.3	1.0
Portugal	16.1	16.1
Romania	6.1	4.7
Slovakia	n.a.	n.a.
Spain	25.4	27.2
Sweden	15.6	17.3
Switzerland	0.9	0.9
Turkey	1.2	3.7
United Kingdom	1.3	1.1
TOTAL EUROPE as weighted average	7.5	7.5

Consumption of wellenstoff and other fluting (as % of the Total Consumption of Raw Materials)

	2010	2011
Austria	28.1	28.1
Belgium	43.2	42.8
Croatia	34.6	39.1
Czech Republic	36.6	39.4
Finland	13.4	16.0
France	n.a.	n.a.
Germany	37.0	37.9
Hungary	34.9	34.4
Italy	36.9	37.1
Netherlands	36.2	35.5
Norway	23.2	23.5
Poland	38.9	39.0
Portugal	27.0	27.0
Romania	33.1	35.4
Slovakia	46.1	47.2
Spain	14.7	15.5
Sweden	20.6	18.5
Switzerland	35.8	34.9
Turkey	46.5	44.4
United Kingdom	35.6	34.1
TOTAL EUROPE as weighted average	34.1	34.3

Total Number of Personnel

	2010		2011	
	Production Employees	Total Employees	Production Employees	Total Employees
Austria	1,389	1,895	1,252	1,692
Belgium	1,658	2,177	1,633	2,075
Croatia	551	781	473	620
Czech Republic	1,237	1,594	1,113	1,433
Finland	710	937	690	913
France	n.a.	n.a.	n.a.	n.a.
Germany	12,919	17,918	12,724	17,972
Hungary	1,068	1,457	1,018	1,429
Italy	5,800	13,000	5,770	12,950
Netherlands	1,431	2,129	1,387	2,111
Norway	399	574	320	515
Poland	3,539	5,564	4,006	5,771
Portugal	1,085	1,354	1,085	1,354
Romania	1,295	1,782	1,200	1,620
Slovakia	259	367	256	360
Spain	7,564	10,042	7,570	10,100
Sweden	1,256	1,770	1,268	1,776
Switzerland	905	1,316	918	1,332
Turkey	5,467	7,786	5,517	8,054
United Kingdom	7,359	11,150	7,106	10,766
TOTAL EUROPE	55,891	83,593	55,306	82,843

Production per Head in 1000 m²

	2010	2011
Austria	644	720
Belgium	571	590
Croatia	441	455
Czech Republic	669	768
Finland	392	406
France	n.a.	n.a.
Germany	706	726
Hungary	449	469
Italy	1,107	1,102
Netherlands	834	873
Norway	496	603
Poland	793	733
Portugal	611	611
Romania	365	415
Slovakia	475	500
Spain	556	559
Sweden	522	521
Switzerland	524	513
Turkey	540	584
United Kingdom	537	545
TOTAL EUROPE	757	776

Nominal Working Time and Productivity per Head

	Working Time [hours / year]		Productivity [m ² /man hour]	
	2010	2011	2010	2011
Austria	1,703	1,706	378	422
Belgium	1,499	1,482	381	398
Croatia	2,016	2,008	219	226
Czech Republic	1,830	1,832	366	419
Finland	1,699	1,699	230	239
France	n.a.	n.a.	n.a.	n.a.
Germany	1,850	1,850	382	392
Hungary	1,930	1,905	232	246
Italy	1,760	1,760	629	626
Netherlands	n.a.	n.a.	n.a.	n.a.
Norway	1,725	1,725	288	350
Poland	2,024	2,016	392	364
Portugal	1,657	1,657	369	369
Romania	1,856	1,790	197	232
Slovakia	1,875	1,815	253	275
Spain	1,776	1,768	313	316
Sweden	1,500	1,480	348	352
Switzerland	2,008	2,029	261	253
Turkey	2,040	2,040	265	286
United Kingdom	1,710	1,710	314	318
TOTAL EUROPE	1,803	1,793	323	338

Classification of shipment by end-use sector, as a percentage of turnover 2011

	Austria	Belgium	Croatia	Czech Republic	Finland	France	Germany	Hungary	Italy	Netherlands	Norway	Poland	Portugal	Romania	Slovakia	Spain	Sweden	Turkey	United Kingdom	Weighted Average
1	n.a.	48.7	37.4	24.8	26.1	n.a.	27.5	20.7	7.9	36.3	n.a.	31.9	16.7	25.0	23.8	16.5	27.9	32.1	n.a.	26.3
2	n.a.	6.4	1.9	2.0	7.6	n.a.	3.5	4.9	42.2	12.8	n.a.	4.4	4.8	6.0	3.1	23.0	1.7	8.1	n.a.	9.2
3	n.a.	4.4	7.9	5.0	8.5	n.a.	5.4	1.1	9.2	6.3	n.a.	6.7	12.5	4.0	7.6	15.0	4.9	3.9	n.a.	7.8
4	n.a.	0.4	1.1	1.4	0.0	n.a.	0.9	0.7	1.2	1.8	n.a.	1.3	0.4	1.0	0.6	1.6	0.0	1.0	n.a.	1.1
Subtotal	n.a.	59.9	48.3	33.2	42.2	n.a.	37.3	27.4	60.5	57.2	n.a.	44.3	34.4	36.0	35.1	56.1	34.5	45.1	n.a.	44.4
5	n.a.	2.2	1.7	0.4	1.4	n.a.	1.3	0.6	1.5	1.2	n.a.	0.9	3.3	2.0	0.3	1.0	0.6	5.1	n.a.	1.2
6	n.a.	2.3	1.3	2.5	2.4	n.a.	1.9	4.6	1.2	0.3	n.a.	4.0	4.5	7.0	1.8	1.0	5.8	3.3	n.a.	1.9
7	n.a.	4.8	2.9	4.9	15.6	n.a.	5.0	2.8	12.5	7.6	n.a.	2.7	5.8	2.5	2.9	2.5	19.2	1.2	n.a.	5.4
8	n.a.	7.7	1.5	2.5	2.7	n.a.	5.9	1.4	3.2	4.1	n.a.	2.6	1.7	1.5	6.5	2.0	4.6	2.8	n.a.	4.4
9	n.a.	3.4	1.4	7.5	1.4	n.a.	4.2	5.3	3.8	0.6	n.a.	5.4	2.4	1.5	11.2	3.0	0.0	4.0	n.a.	3.4
10	n.a.	0.2	1.4	3.3	1.8	n.a.	4.0	0.5	1.2	4.3	n.a.	0.8	2.5	1.0	0.1	1.0	0.0	2.0	n.a.	2.6
11	n.a.	1.5	1.4	6.2	2.5	n.a.	1.3	0.8	5.4	1.1	n.a.	2.1	5.4	3.5	0.1	3.0	1.1	6.4	n.a.	1.9
12	n.a.	0.9	0.9	1.5	3.6	n.a.	3.8	0.6	2.0	1.4	n.a.	0.8	2.1	0.2	0.4	0.5	4.1	4.0	n.a.	2.4
13	n.a.	2.9	0.1	1.5	1.8	n.a.	1.3	3.5	0.5	0.5	n.a.	0.3	0.4	3.0	3.2	1.4	0.0	1.1	n.a.	1.4
14	n.a.	0.1	2.8	4.8	3.6	n.a.	2.4	1.5	0.6	0.6	n.a.	3.3	0.8	1.5	3.9	1.9	2.1	1.5	n.a.	2.1
15	n.a.	0.2	0.1	8.5	1.3	n.a.	0.8	17.9	2.6	0.2	n.a.	4.2	0.7	1.0	6.8	3.0	0.0	0.4	n.a.	1.8
16	n.a.	0.2	2.0	2.7	0.4	n.a.	1.1	4.9	1.0	0.4	n.a.	2.3	1.0	2.5	1.0	1.5	0.0	6.5	n.a.	1.2
17	n.a.	1.2	0.0	3.5	0.4	n.a.	2.4	0.1	0.5	1.9	n.a.	2.3	0.8	0.5	0.0	1.5	0.0	6.5	n.a.	1.8
18	n.a.	0.3	0.0	0.0	0.1	n.a.	0.7	0.0	1.0	0.6	n.a.	0.1	0.0	0.1	0.0	0.9	0.0	0.0	n.a.	0.6
19	n.a.	0.0	2.7	3.3	1.8	n.a.	0.0	7.3	1.1	2.4	n.a.	3.8	1.4	1.0	18.7	1.3	0.0	3.2	n.a.	1.0
20	n.a.	1.0	0.0	2.1	0.2	n.a.	0.6	2.3	0.4	0.3	n.a.	0.1	0.7	2.5	0.1	2.0	0.0	0.1	n.a.	1.0
21	n.a.	3.4	0.2	1.1	2.7	n.a.	3.1	0.0	0.5	2.0	n.a.	1.2	2.9	0.2	0.0	2.5	0.0	0.0	n.a.	2.5
22	n.a.	3.7	23.7	4.4	5.3	n.a.	15.9	13.0	0.0	8.0	n.a.	11.5	24.8	31.0	7.9	11.2	20.5	3.9	n.a.	13.4
23	n.a.	4.1	7.6	6.1	8.8	n.a.	7.0	5.5	0.5	5.3	n.a.	7.3	4.4	1.5	0.0	2.7	7.5	2.9	n.a.	5.5
Subtotal	n.a.	40.1	51.7	66.8	57.8	n.a.	62.7	72.6	39.5	42.8	n.a.	55.7	65.6	64.0	64.9	43.9	65.5	54.9	n.a.	55.6
Total	n.a.	100.0	100.0	100.0	100.0	n.a.	100.0	100.0	100.0	100.0	n.a.	100.0	100.0	100.0	100.0	100.0	100.0	100.0	n.a.	

Categories for classification:

- | | |
|--|---|
| 1 Foodstuffs | 13 Machines and parts |
| 2 Agricultural Produce and Fresh Food | 14 Electrical equipment and accessories (except domestic appliance) |
| 3 Beverages | 15 Audio, video and communication equipments |
| 4 Tobacco Products | 16 Electric appliances |
| 5 Textiles, clothing, leather goods | 17 Means of transport |
| 6 Wooden goods and furniture | 18 Precision instruments, optical equipment and watches |
| 7 Paper goods and printed matter | 19 Other industrial product |
| 8 Chemicals and related products | 20 Sportswear and accessories, toys |
| 9 Detergents, soaps, perfumes, cosmetics, etc. | 21 Direct mail companies, dispatching houses |
| 10 Rubber goods | 22 Corrugated Board converters (sheet plans) |
| 11 Glassware, ceramicware and other non minerals | 23 All other not classified above |
| 12 Metalware | |

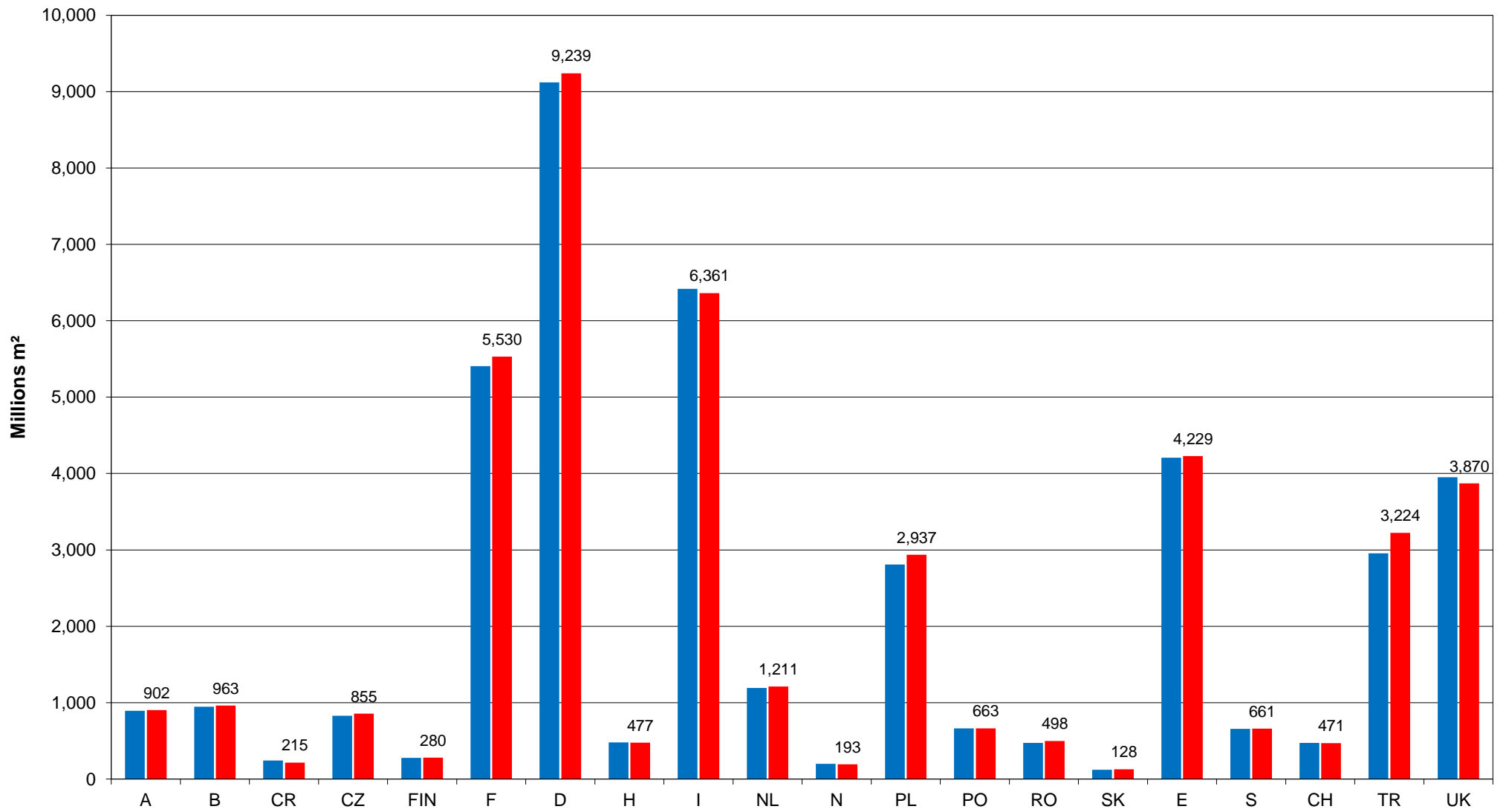
Fluting Types in % of Total Shipments 2011

	B-flute	C-flute	BC-flute	E-flute	Micro-FI	Others
Austria	38.7	16.8	12.4	20.1	1.3	10.7
Belgium	53.1	19.0	11.4	5.8	1.1	9.6
Croatia	45.7	18.6	15.7	17.6	0.0	2.4
Czech Republic	40.3	10.2	24.4	17.0	0.0	8.1
Finland	n.a.	n.a.	n.a.	n.a.	n.a.	n.a.
France	n.a.	n.a.	n.a.	n.a.	n.a.	n.a.
Germany	39.0	14.8	17.8	13.2	1.2	14.0
Hungary	44.4	22.7	14.8	12.9	1.2	4.0
Italy	n.a.	n.a.	n.a.	n.a.	n.a.	n.a.
Netherlands	n.a.	n.a.	n.a.	n.a.	n.a.	n.a.
Norway	45.2	32.5	6.0	15.1	0.5	0.7
Poland	52.9	17.7	9.9	12.7	0.3	6.5
Portugal	42.9	18.2	18.0	7.8	5.4	7.7
Romania	33.0	28.0	17.0	15.0	0.0	7.0
Slovakia	45.6	20.3	19.2	14.6	0.0	0.3
Spain	n.a.	n.a.	n.a.	n.a.	n.a.	n.a.
Sweden	n.a.	n.a.	n.a.	n.a.	n.a.	n.a.
Turkey	29.8	27.8	34.2	0.0	7.7	0.5
United Kingdom	n.a.	n.a.	n.a.	n.a.	n.a.	n.a.
Total Europe as weighted average	34.6	13.7	13.4	10.5	1.0	8.7

Countries	% of the Products by Number of Printing Colours										% Changes				
	2010					2011					2010 / 2011				
	0	1	2	3	> 3	0	1	2	3	> 3	0	1	2	3	> 3
Austria	36.1	35.5	11.9	7.6	8.9	36.4	36.4	10.7	7.8	8.7	0.8	2.5	-10.1	2.6	-2.2
Belgium	19.5	48.4	14.9	11.2	6.0	22.0	46.9	14.4	10.8	5.9	12.8	-3.1	-3.4	-3.6	-1.7
Croatia	35.6	40.7	11.4	8.5	3.8	46.1	32.0	11.8	6.8	3.3	29.5	-21.4	3.5	-20.0	-13.2
Czech Republic	0.0	0.0	0.0	0.0	0.0	28.3	41.2	19.6	7.2	3.7	n.a.	n.a.	n.a.	n.a.	n.a.
Finland	n.a.	n.a.	n.a.	n.a.	n.a.	n.a.	n.a.	n.a.	n.a.	n.a.	n.a.	n.a.	n.a.	n.a.	n.a.
France	n.a.	n.a.	n.a.	n.a.	n.a.	n.a.	n.a.	n.a.	n.a.	n.a.	n.a.	n.a.	n.a.	n.a.	n.a.
Germany	30.8	34.5	14.8	9.9	10.0	30.7	34.5	14.5	9.6	10.7	-0.3	0.0	-2.0	-3.0	7.0
Hungary	49.7	26.3	10.8	5.1	8.1	47.8	26.4	13.4	4.5	7.9	-3.8	0.4	24.1	-11.8	-2.5
Italy	n.a.	n.a.	n.a.	n.a.	n.a.	n.a.	n.a.	n.a.	n.a.	n.a.	n.a.	n.a.	n.a.	n.a.	n.a.
Netherlands	n.a.	n.a.	n.a.	n.a.	n.a.	n.a.	n.a.	n.a.	n.a.	n.a.	n.a.	n.a.	n.a.	n.a.	n.a.
Norway	24.0	35.3	18.1	15.1	7.5	24.7	33.7	18.1	14.7	8.8	2.9	-4.5	0.0	-2.6	17.3
Poland	35.2	26.7	15.0	10.8	12.3	36.7	26.7	13.7	9.8	13.1	4.3	0.0	-8.7	-9.3	6.5
Portugal	n.a.	n.a.	n.a.	n.a.	n.a.	n.a.	n.a.	n.a.	n.a.	n.a.	n.a.	n.a.	n.a.	n.a.	n.a.
Romania	23.0	34.0	25.0	12.0	6.0	27.0	35.0	22.0	10.0	6.0	17.4	2.9	-12.0	-16.7	0.0
Slovakia	7.3	28.9	36.1	19.9	7.8	6.9	27.2	38.4	21.3	6.2	-5.5	-5.9	6.4	7.0	-20.5
Spain	n.a.	n.a.	n.a.	n.a.	n.a.	n.a.	n.a.	n.a.	n.a.	n.a.	n.a.	n.a.	n.a.	n.a.	n.a.
Sweden	n.a.	n.a.	n.a.	n.a.	n.a.	n.a.	n.a.	n.a.	n.a.	n.a.	n.a.	n.a.	n.a.	n.a.	n.a.
Turkey	n.a.	n.a.	n.a.	n.a.	n.a.	n.a.	n.a.	n.a.	n.a.	n.a.	n.a.	n.a.	n.a.	n.a.	n.a.
United Kingdom	n.a.	n.a.	n.a.	n.a.	n.a.	n.a.	n.a.	n.a.	n.a.	n.a.	n.a.	n.a.	n.a.	n.a.	n.a.

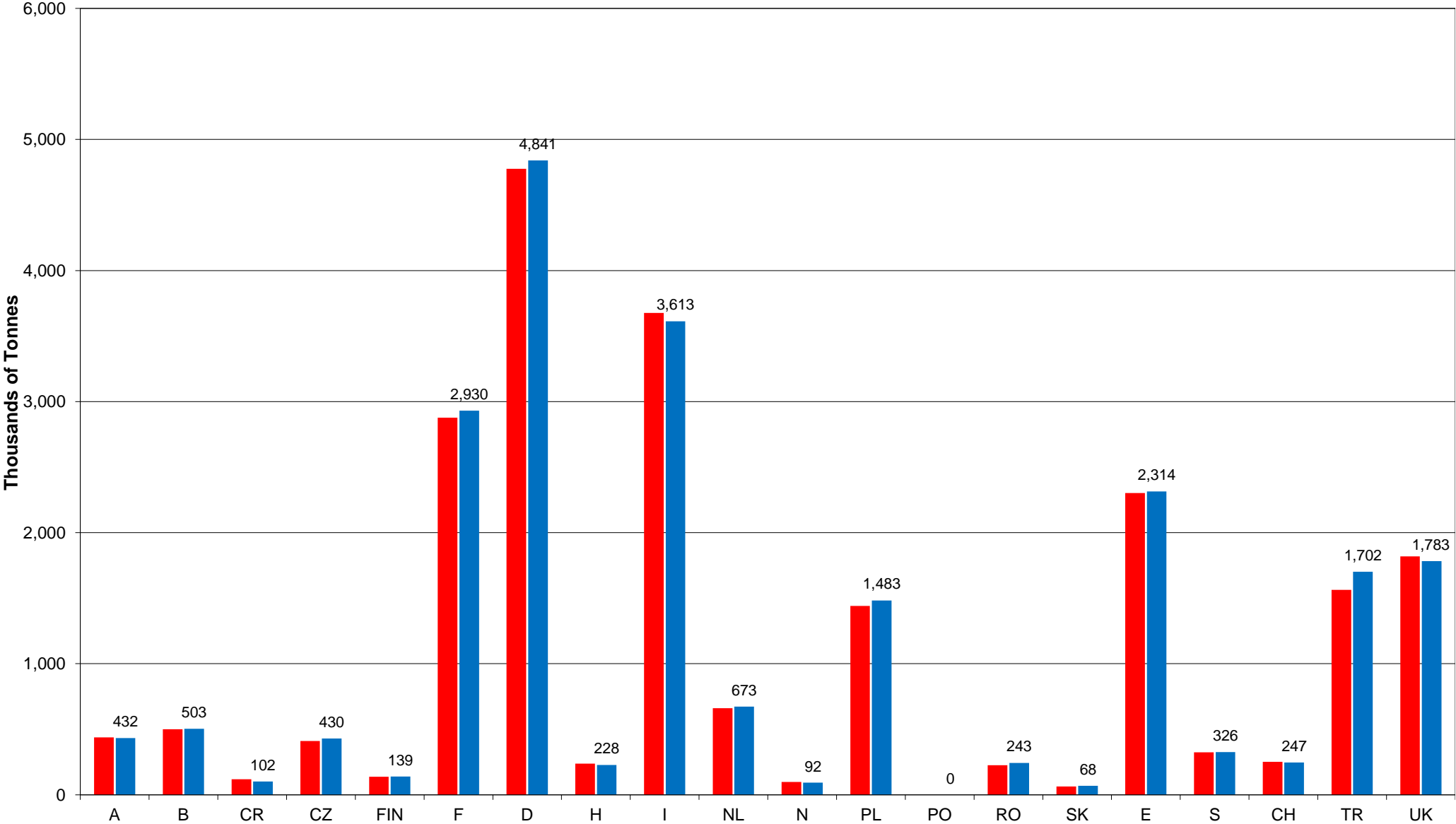
Shipments in Millions m²

■ 2010 ■ 2011



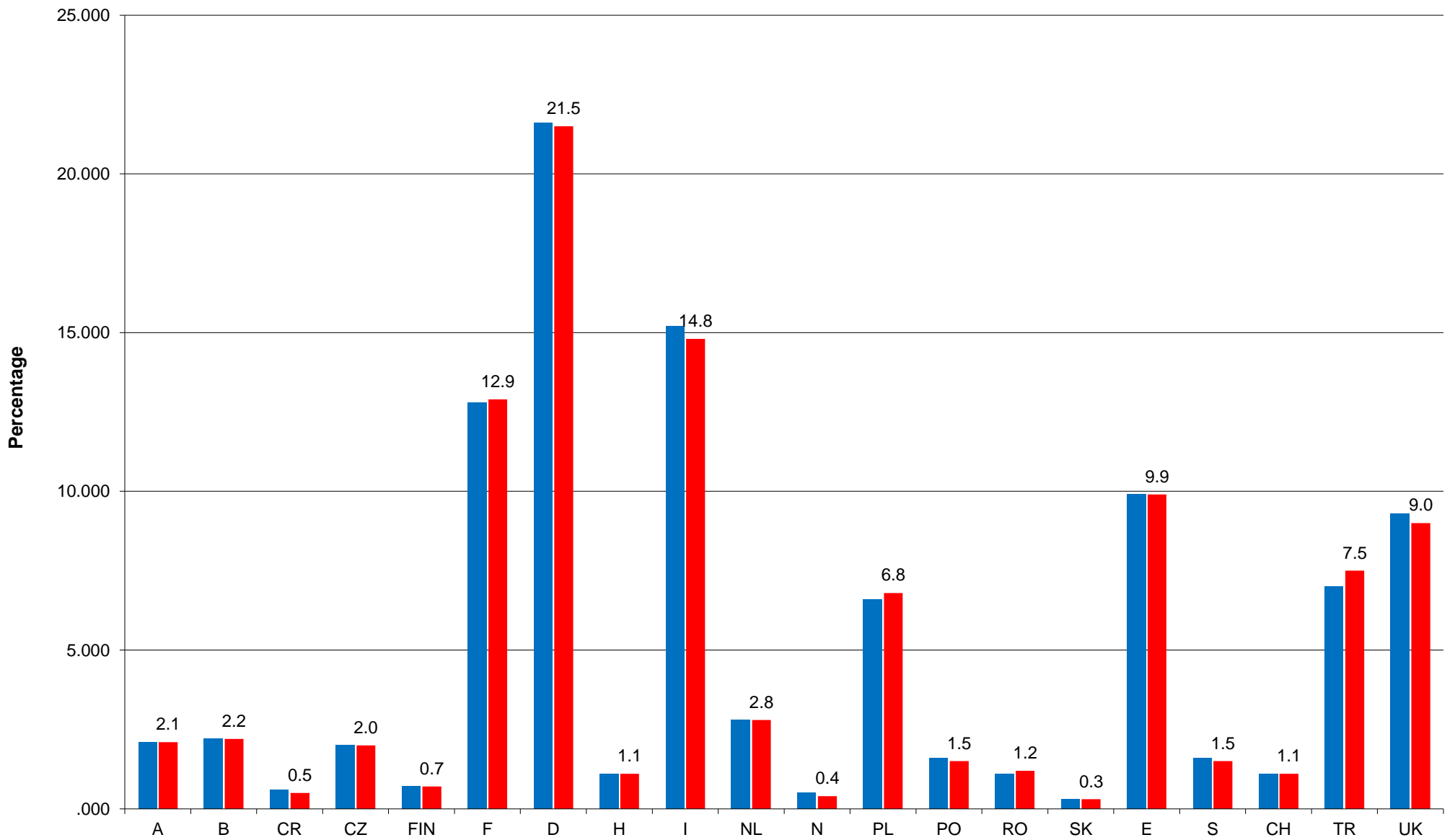
Shipments in '000 Tonnes

■ 2010 ■ 2011

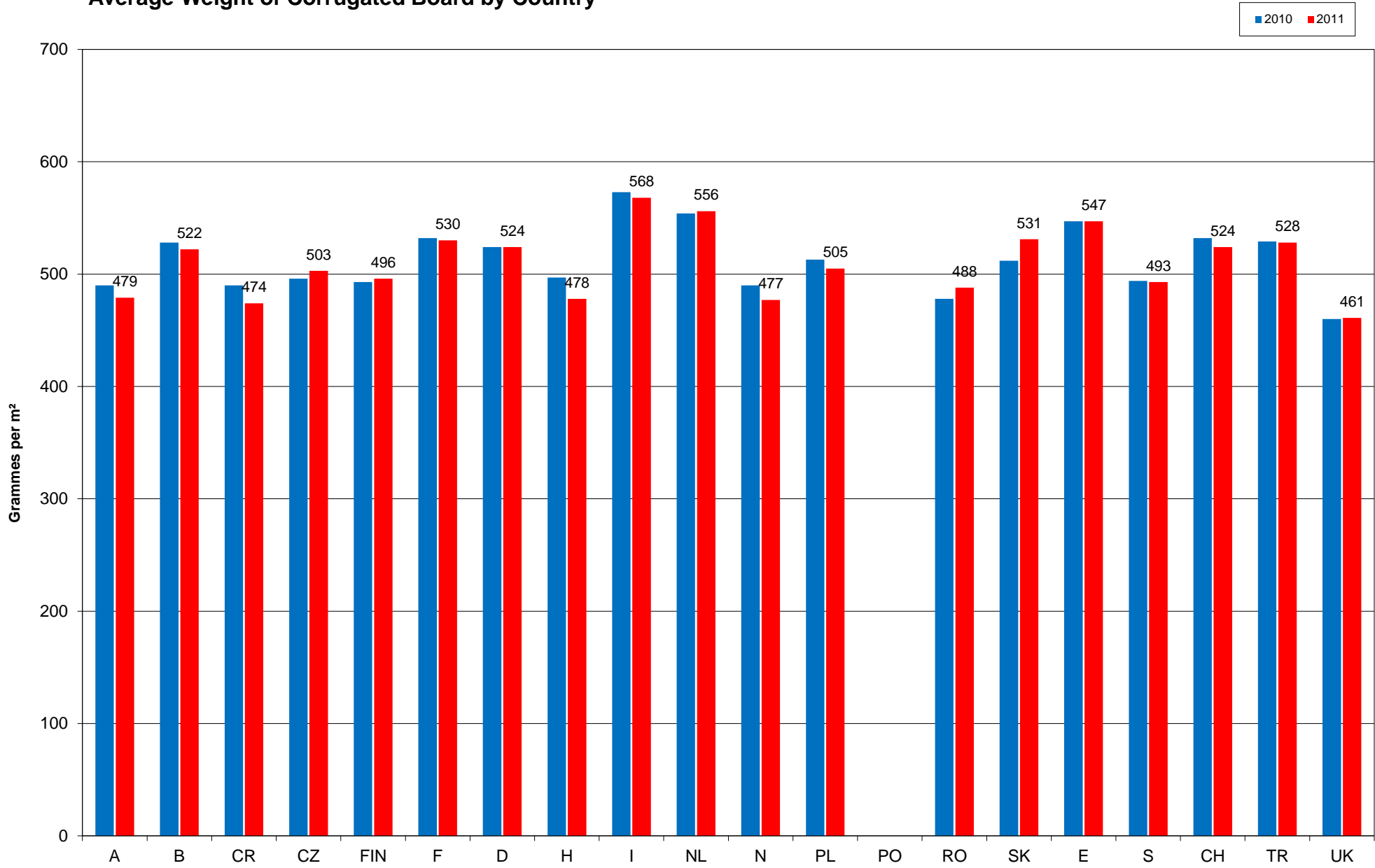


Relative Share of Total Shipments by Country (based on m²)

2010 2011



Average Weight of Corrugated Board by Country



Fluting Type

